

D-HB

Door-type
High Temperature
Dishwashing Machine with Booster Heater

Champion®

The Dishwashing Machine Specialists



QUICK FACTS

Capacities

Racks per hr. (NSF rated)	55
Wash tank US gal. (imp gal./liters)	9 (7.5/34)

Motor horsepower

1

Water consumption

Gal. per hr. (max. use) US gal. (imp gal./liters)	61 (51/231)
Gal. per rack US gal. (imp gal./liters)	1.1 (0.93/4.2)

Temperatures °F/°C

Wash	150/66
Rinse	180/82

Heating

Tank heat, electric, (kW)	4.7
Tank heat, steam (lbs./kg per hr. required at 15 psi/103.5 kPa flow pressure)	25/11.4
Electric booster (kW required for 40°F/22°C rise)	9
Electric booster (kW required for 70°F/39°C rise)	13
Steam booster (externally mounted) (lbs./kg per hr. required for 40°F/22°C rise)	50/23
Steam booster (externally mounted) (lbs./kg per hr. required for 70°F/39°C rise)	65/29

Time cycle in seconds

Wash	40
Dwell	10
Rinse	10
Total cycle	60

Saves Space, Energy and Water!

D-HB makes dishes, glasses, silverware and utensils shine in only one minute.

Space-saving Built-in Electric Booster

Compact D-HB provides fresh 180°F/82°C rinse water without expensive external equipment.

Simple, Fully-automatic Operation

Flip one switch to fill and heat the wash tank and turn on the booster heater. Then, one pushbutton washes rack after rack of sparkling clean ware. An automatic electrically operated drain valve ensures drain is properly sealed.

Straight-through or Corner Model Configuration

The balanced door lift system and track arrangement allow for quick, easy rack loading. The D-HB comes in straight-through or corner operation.

Superior, Soil-stripping Wash

Improved wash arms provide 50 percent greater cleaning power. The latest-design spray pattern penetrates every surface yet protects delicate ware.

Save on Water and Detergent

Recirculating wash is replenished by final rinse, so only 1.1 US gallons (0.93 imperial gals., 4.2 liters) of fresh water and less detergent are needed to process one rack.

Standard Features

- Automatic tank fill
- Built-in stainless steel electric booster (internal or external steam booster optional)
- Automatic electric drain valve
- Corner model available (contact factory)
- Electric tank heat (4.7 kW)
- Balanced door lift system
- Low-water tank heat protection
- 1 Hp drip-proof pump motor
- Door safety switches
- Top-mounted, splash-proof control console
- Interchangeable upper and lower spray arms
- Stainless steel pump impeller
- Stainless steel front and side panels
- Detergent/chemical connection provisions
- Water pressure regulating valve (mounted)
- Single point electrical connection (see chart)

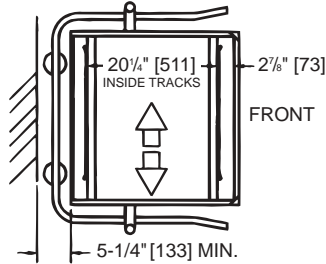
D-HB

Door-type
High Temperature
Dishwashing Machine with Booster Heater

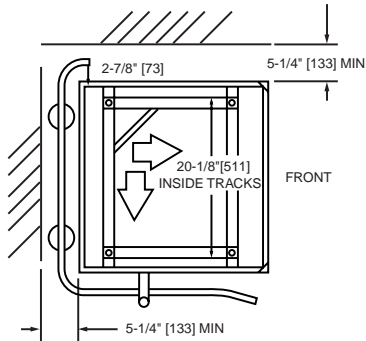
Champion®

The Dishwashing Machine Specialists

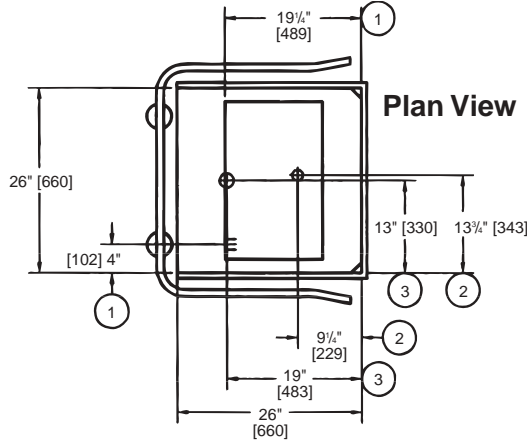
Dimensions shown in inches and [millimeters]



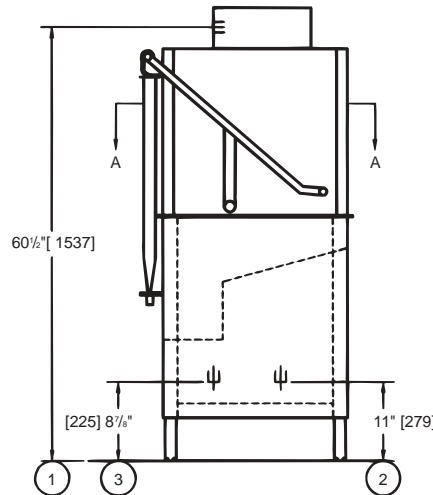
Straight-through Configuration



Corner Configuration



Plan View



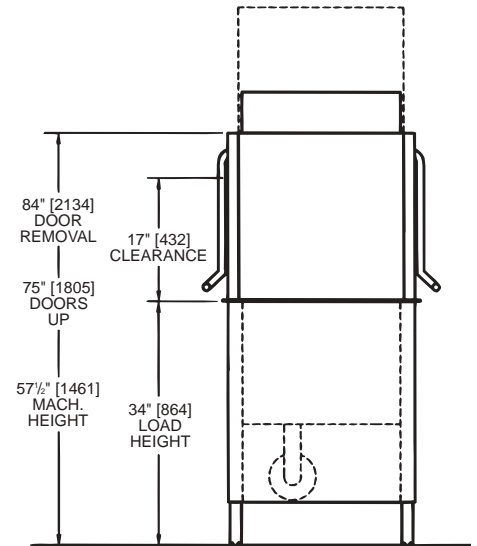
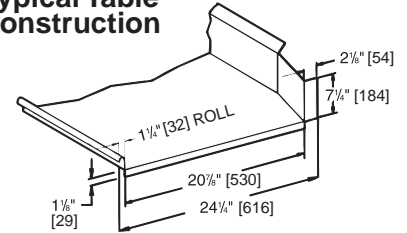
Side View

Length between table connections: **26\"/>**

Volume crated: **46 cu. ft./1.3 cu. m**

Shipping weight crated: **350 lbs./160 kg**

Typical Table Construction



Front View

Utilities	
1	Electrical: (See Box)
2	Hot water: 3/4" NPT 110°F/48°C - 140°F/60°C hot water connection. Flow pressure 20-22 psi. (138-151 kPa).
3	Drain: 2" O.D. connection. Max. flow rate 15 US gpm. (12 imp. gpm/54 lpm.)

Warning:

Plumbing and electrical connection should be made by qualified personnel who will observe all the applicable plumbing, sanitary and safety codes and the National Electrical Code.

Note:

Water Hammer Arrestor (meeting ASSE-1010 standard or equivalent) to be supplied (by others) in common water supply line at service connection.



For Steam booster Connections, Contact Factory.

For Electrical Heat

D-HB with 40°F/22°C Rise Booster			
Elec. Specs	Rated Amps	Minimum Supply Ckt. Conductor Ampacity	Maximum Overcurrent Protective Device
208/60/1	71	75	75
240/60/1	79	90	90
208/60/3	40	50	50
240/60/3	45	50	50
480/60/3	20	25	25
575/60/3	16	20	20

For Electrical Heat

D-HB with 70°F/39°C Rise Booster			
Elec. Specs	Rated Amps	Minimum Supply Ckt. Conductor Ampacity	Maximum Overcurrent Protective Device
208/60/3	57	60	60
240/60/3	64	70	70
480/60/3	29	35	35
575/60/3	25	30	30

For Steam Heat

D-HB with 40°F/22°C or 70°F/39°C Rise Booster			
Elec. Specs	Rated Amps	Minimum Supply Ckt. Conductor Ampacity	Maximum Overcurrent Protective Device
208/60/1	13	15	15
240/60/1	12	15	15
208/60/3	6	15	15
240/60/3	6	15	15
480/60/3	3	15	15
575/60/3	3	15	15

Due to an ongoing value analysis program at Champion, specifications in this catalog are subject to change without notice.

Champion Industries, Inc., P. O. Box 4149, Winston-Salem, NC 27115 • 336/661-1556 • Fax: 336/661-1979 • www.championindustries.com