

**D****6, 10, 12 & 20 GALLON  
TILTING COUNTER-TOP DIRECT  
STEAM KETTLE**

JOB NAME \_\_\_\_\_

ITEM NO. \_\_\_\_\_

NO. REQUIRED \_\_\_\_\_

**MODEL:** m FT-6  
 m FT-10  
 m FT-12  
 m FT-20

**DESCRIPTION:** Will be a Market Forge® Tilting Counter-Top, direct steam connected kettle, model:  
 m FT-6 - 6 Gallons - 23 liters - Capacity  
 m FT-10 - 10 Gallons - 38 liters - Capacity  
 m FT-12 - 12 Gallons - 46 liters - Capacity  
 m FT-20 - 20 Gallons - 76 liters - Capacity

Kettle will be constructed of welded satin finish, stainless steel type 304. A double wall kettle interior will form a steam jacket around the lower 2/3 of the kettle. Kettle bottom will be of elliptical design for improved heat circulation.

Tubular stainless steel mounting frame will have steam supply and condensate return pipes completely concealed within frame members.

Sealed stainless steel tilt mechanism bearings will permit the kettle to tilt forward 90° for complete emptying. A removable operating handle with heat-proof knob will be mounted on the left or right side of each kettle.

Kettle will be built to A.S.M.E. code and will be N.S.F. approved.

**OPERATION WILL BE BY:**

Direct steam at a minimum of 5 PSI (0.4 kg/cm<sup>2</sup>) and a maximum of 50 PSI (3.4 kg/cm<sup>2</sup>).

**OPERATION AT EXTRA COST:**

- One-piece lift-off stainless steel cover
- Stainless steel wire basket
- Double pantry faucet with swing spout and mounting bracket
- Single pantry faucet with swing spout and mounting bracket
- 1/2" 13mm leg-mounted steam control valve
- 1 1/2" 38mm draw-off valve with strainer
- Steam Trap
- Check Valve
- Type 316 stainless steel liner for high acid content products
- 18" 457mm high floor stand with sliding drain pan
- 28" 711mm high stainless steel cabinet base with hot and cold water fill faucets, depressed area and drains, clean-up pan with removable splash guard, and steam control valve on stainless steel marine edged counter-top
- 22" 559mm cabinet base (same as above)

The manufacturer reserves the right to modify materials and specifications without notice.

SPEC NO. S-2189C  
03/03

FOOD SERVICE EQUIPMENT  
Direct Steam Kettle



**MARKET FORGE**  
INDUSTRIES INC.

An Employee Owned Company

35 Garvey Street, Everett, MA 02149



PRINTED IN U.S.A.

Tel. (617) 387-4100, Facsimile: 617-387-4456 (MA only) 800-227-2659 (outside MA)

# DETAILS & DIMENSIONS

# 6, 10, 12 & 20 GALLON TILTING COUNTER-TOP DIRECT STEAM KETTLE

# D

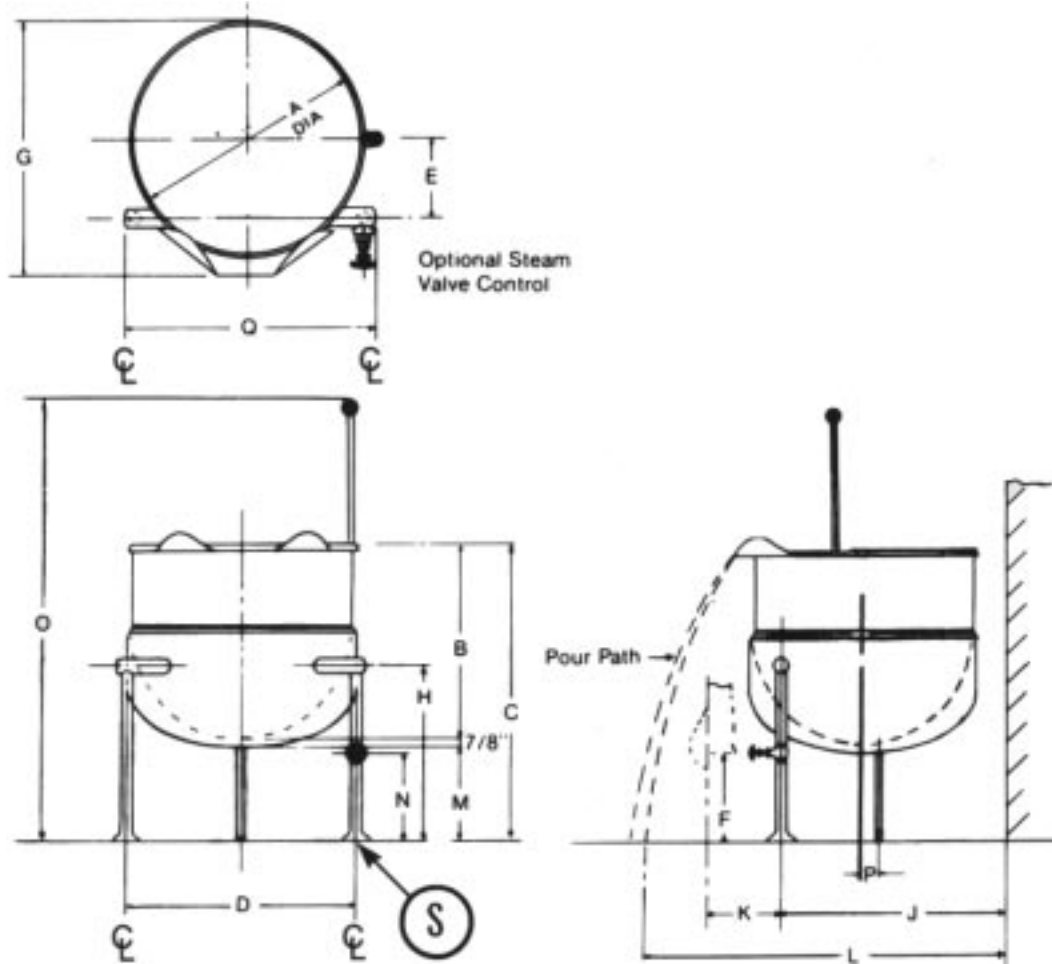
### SERVICE CONNECTIONS

**NOTE:** If steam generator to which kettle is to be connected does not provide for condensate return, a 1/2" 13mm steam trap must not be installed. If steam generator does not provide for condensate return, both a 1/2" 13mm steam trap and 1/2" 13mm check valve must be installed.

<b>S</b>	Steam Supply - 1/2" 13mm IPS, 15-50 PSI 1.0-3.5kg/cm <sup>2</sup> .
<b>sCR</b>	Condensate Return - 1/2" 13mm IPS

<sup>s</sup>Not Shown.

MODEL	CAPACITY	UNITS	A	B	C	D	E	F	G	H	J	K	L	M	N	O	P	Q
FT-6	6 Gallons 23 liters	inches mm	12 305	14.38 365	19.38 492	13.75 349	5 127	6.75 171	14.75 375	8.38 213	9 225	10.5 267	22 559	4 102	4.38 111	2.7 686	0 0	15.75 400
FT-10	10 Gallons 38 liters	inches mm	16 406	15 381	19.38 492	13.75 349	7 178	6 153	18.75 476	7.75 197	16 406	11.25 286	28 711	3.38 86	5.5 140	30.5 775	2 51	15.75 400
FT-12	12 Gallons 46 liters	inches mm	16 406	15 381	21.38 543	13.75 349	7 178	6 152	18.75 476	7.75 197	16 406	13.25 337	30 762	3.38 86	5.5 140	32.5 826	2 51	15.75 400
FT-20	20 Gallons 76 liters	inches mm	21 533	18 457	26 660	23.5 597	1.5 38	6 152	24 610	15.5 394	16.5 419	10 254	36 914	1.38 187	10 254	38 965	1.5 30	26.5 673



\*It is our policy to build equipment which is design certified by U.L., A.S.M.E., N.S.F. and C.S.A. However, a continuing program of product improvement makes it necessary to submit new models to the agencies as they are developed and consequently not all models bear the appropriate agency labels at all times.

SPEC NO. S-2189C  
03/03

FOOD SERVICE EQUIPMENT  
Direct Steam Kettle



**mf** MARKET FORGE  
INDUSTRIES INC.  
An Employee Owned Company

35 Garvey Street, Everett, MA 02149

Tel. (617) 387-4100, Facsimile: 617-387-4456 (MA only) 800-227-2659 (outside MA)