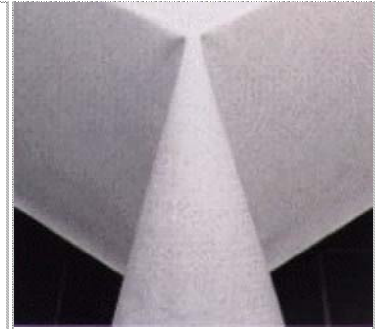


5837 Lattice Weave

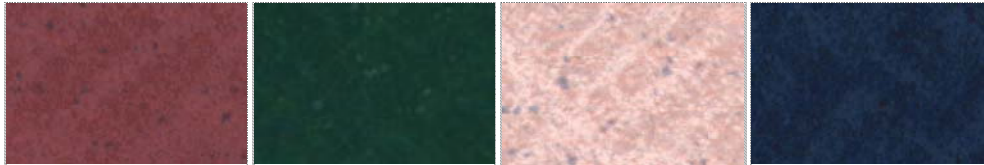
A subtle, sponged lattice pattern with a multi-colored spray background. Colors coordinate with most current decor trends.

Our **DesignerT Series** is based on recommendations by leading designers in the color/design industry. The patterns and colors in this Series reflect the latest trends. Vinyls are 8-10 gauge.



5837 Lattice Weave

Lattice Weave 5837 Vinyl Tablecloths are available in **Cranberry, Forest Green, Mauve, Navy, and Oyster** (shown above).

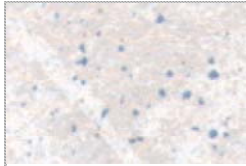


Cranberry (112)

Forest Green (64)

Mauve (90)

Navy (11)



Oyster (143)

Note: For tablecloths, Marko By Carlisle recommends an 8" drop on all four sides of the table; Add 16" to the length and the width of the table top dimensions. For example: a 36" x 36" table top should have a 52" x 52" tablecloth.