



"Your Solutions Partner"

# Specifications

F.O.B. Sedalia, Missouri 65301



DPAH-3-CP

### OPTIONS:

- Beaded 12" x 20" openings - **HFST**
- Tray shelves - **PR-2, PR-3, PR-4**
- Fluorescent lights - **FL-2, FL-3, FL-4**
- Incandescent bullet lamps - **BI-2, BI-3, BI-4**
- Legs in lieu of casters
- Adapter bars - **513, 514, 515, 516**
- False bottom - **FB**
- Body latches
- Tray shelf on end

### AGENCY LISTING:



**DUKE MANUFACTURING CO.**  
2305 N. Broadway  
St. Louis, MO 63102

800.735.3853 Toll Free  
314.231.1130 In Missouri  
314.231.5074 Fax  
www.dukemfg.com

Approval Stamp(s):

### PROJECT INFORMATION:

PROJECT: \_\_\_\_\_  
 ITEM: \_\_\_\_\_  
 QUANTITY: \_\_\_\_\_

### MODEL:

## EconoMate Buffet Units Cold Pan - Ice Cooled

- DPAH-2-CP/DPAH-2-CP** Portable (floor models) 2-well cold pan
- DPAH-3-CP/OPAH-2-CP** Portable (floor models) 3-well cold pan
- DPAH-4-CP/OPAH-2-CP** Portable (floor models) 4-well cold pan
  
- TAH-2-CP** Table top 2 cold pan wells
- TAH-3-CP** Table top 3 cold pan wells
- TAH-4-CP** Table top 4 cold pan wells

### BODY:

- Heavy gauge paint grip steel
- Choice of (12) powder coat paint colors (must choose one):
  - #217105 - Bright White  #217103 - Natural Almond
  - #217150 - Orange Red  #217154 - Racing Red
  - #217107 - Hollyberry Red  #217120 - Sky Blue
  - #217127 - Fence Green  #217152 - Stone Gray
  - #217102 - Duke Silver  #217113 - Brown Kickplate
  - #217101 - Semi-Gloss Black  #217125 - Textured Black
- Heavy gauge, 300 Series stainless steel top
- Clear plexiglass canopy, with black powder coat steel brackets, powder coat steel ends to match body

### BASES:

- Choice of
  - Open base - **O**
  - Closed base - **D**
  - Table top - **T**
- 5" NSF listed black swivel casters, 2 with locks

### COLD PAN:

- 5" deep liner, sloping to 1" brass drain with plug
- Fully insulated stainless steel pan
- Width of 19-7/8"

### SHORT FORM SPECIFICATIONS:

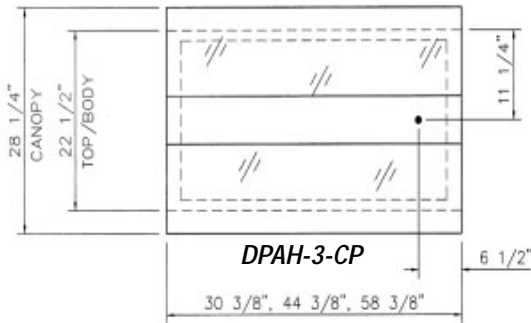
**Duke EconoMate Cold Pan Units - Ice Cooled.** Body shall be constructed of heavy gauge steel, painted in customer's choice of 12 powder coat paint finishes (see list above). Heavy gauge 300 Series stainless steel top shall be supplied, with easy-to-clean, clear plexiglass canopy. 5" deep ice cooled cold pan compartment to be fully insulated. Width of liner on table top and portable units to be 19-7/8". Bases on all portable units shall be open or closed base style. Portable units shall be mounted on 5" NSF listed swivel casters, two with locks. When ordering bases, precede model number with "**O**" for Open Base or "**D**" for closed base with doors. Table top models available. Canopy adds 5-3/4" to width and 20" to height of units.

# Econo-Mate®

## ECONOMATE BUFFET UNITS COLD PAN - ICE COOLED

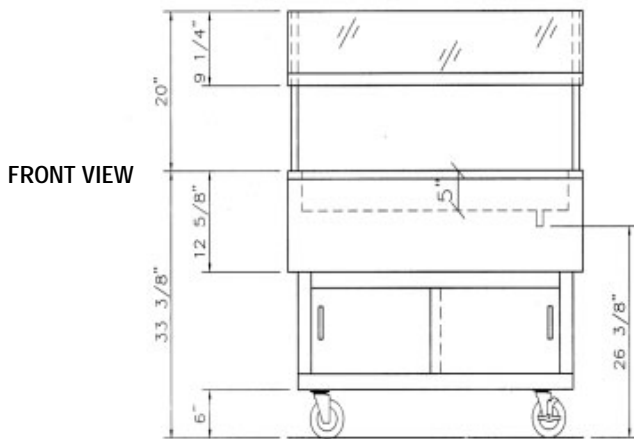
- DPAH-2-CP/DPAH-2-CP** Portable (floor models) 2-well cold pan
- DPAH-3-CP/OPAH-2-CP** Portable (floor models) 3-well cold pan
- DPAH-4-CP/OPAH-2-CP** Portable (floor models) 4-well cold pan

- TAH-2-CP** Table top 2 cold pan wells
- TAH-3-CP** Table top 3 cold pan wells
- TAH-4-CP** Table top 4 cold pan wells

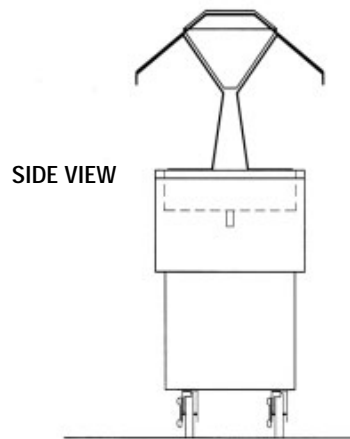


TOP VIEW

LEGEND	
•	- Drain location
When ordering storage bases, precede model number with "O" for Open Base or "D" for closed base with doors. Example: <b>OPAH-2-BC</b> for Open Base Unit.	



FRONT VIEW



SIDE VIEW

### DIMENSIONS:

#### Portable Ice Cooled Cold Pan Units

Freight Class - 100

Model	Length		Width		Height		Liner Dimensions in.			Cube crated ft.	Weight	
	in.	cm	in.	cm	in.	cm	L	W	D		lbs.	kg
DPAH-2-CP/OPAH-2-CP	30-3/8	77.2	22-1/2	57.2	33-3/8	84.8	26	19-7/8	5	23.1	204/200	92.7/90.9
DPAH-3-CP/OPAH-3-CP	44-3/8	112.8	22-1/2	57.2	33-3/8	84.8	40	19-7/8	5	32.0	261/257	118.6/116.8
DPAH-4-CP/OPAH-4-CP	58-3/8	148.3	22-1/2	57.2	33-3/8	84.8	54	19-7/8	5	40.9	282/278	128.2/126.4

#### Table Top Ice Cooled Cold Pan Units

Freight Class - 100

Model	Length		Width		Height		Liner Dimensions - in.			Cube crated ft.	Weight	
	in.	cm	in.	cm	in.	cm	L	W	D		lbs.	kg
TAH-2-CP	30-3/8	77.2	22-1/2	57.2	13-5/8	34.7	26	19-7/8	5	12.1	142	64.6
TAH-3-CP	44-3/8	112.8	22-1/2	57.2	13-5/8	34.7	40	19-7/8	5	16.7	183	83.2
TAH-4-CP	58-3/8	148.3	22-1/2	57.2	13-5/8	34.7	54	19-7/8	5	21.4	208	94.6

\*NOTE: Canopy adds 5-1/2" (13.9 cm) to width and 20" (50.8 cm) to height.



DUKE MANUFACTURING CO.  
2305 N. Broadway  
St. Louis, MO 63102

800.735.3853 Toll Free  
314.231.1130 In Missouri  
314.231.5074 Fax  
www.dukemfg.com

"Your Solutions Partner"

Specifications subject to change

04/02

Printed in U.S.A.  
©2002, Duke Manufacturing Co.