



Project:

Item Number:

Quantity:

MODULAR DROP-IN: FIVE WELL HOT



Modular Drop-In: Five Well Hot

DESCRIPTION

The modular drop-in is designed for top-mount installation and does not require hard-wiring. The drop-in comes complete with a six-foot power cord with plug and a four-foot control cord for remote installation.

Full perimeter drip-edge contains spills and condensation within the stainless countertop area of the drop-in. Drip-edge adds additional strength to the flange area.

High-density glass fiber insulation allows use of 625W elements for lower energy consumption and reduced costs while meeting NSF4 performance standards. Also available with 1000W elements. High-density glass fiber insulation and internal design allows the hot well drop-ins to be installed with zero clearance.

Drop-ins can operate wet or dry, however, moist operation is recommended for even heating of the food product.

Stainless steel walls are 6-3/8" deep to allow use of full-size and fractional pans up to six inches deep while still providing moist heat. Adaptor bars are recommended when using fractional pans.

Agency Certifications



MODELS:

	1000W Models	625W Models	Description
208-240V	36408-01	36408	Standard Drain
Infinite Control	36408-51	36408-50	Manifold Drain
	36408-61	36408-60	Manifold Drain, Auto-Fill
208-240V,	36408-11	36408-10	Standard Drain
Thermostatic Control	36408-71	36408-70	Manifold Drain
	36408-81	36408-80	Manifold Drain, Auto-Fill

FEATURES

- Top is 18-gauge stainless steel, 18-8 Type 304, with 3/8" overhang on all sides and die stamped with full perimeter drip-edge, and 19-7/8" x 11-7/8" openings.
- Breaker gasket included for installation under drip-edge.
- Flat work surface around opening.
- Deep drawn stainless steel well is 20-gauge 18-8 stainless, 6-3/8" deep.
- Standard 1000W or 625W heating element.
- Infinite or thermostatic control.
- Power indicator light.
- Standard drain is 1/2" stainless fitting welded to pan with ball valve shutoff below exterior housing.
- Manifold drain option is 1" copper tubing and retains individual well shut-off and adds manifold shutoff.
- Unit insulated on sides, between wells, and below element assembly with high-density glass fiber insulation.
- Exterior housing is 20-gauge galvanized steel.
- Drop-in is supplied with stainless steel control panel connected to bottom of unit for shipping.
- Control panel may remain on unit or be remote mounted.
- Control wires contained in flexible rubber cord.
- Unit comes with cord and plug and does not require hard wiring installation.
- Positioning clips provided to center drop-in within cutout.
- Standard mounting clips adjustable for up to 3" thick counters.
- Full one-year parts and labor warranty.
- Sheet pan adapter available. Item No. 19186.

Approvals

Date:

--



Setting the Standard™

www.vollrathco.com

The Vollrath Company, L.L.C.
 1236 North 18th Street
 Sheboygan, WI 53082-0611
 U.S.A.
 Main Tel: 800.624.2051
 Service Tel: 800.628.0832
 FAX: 800.752.5620

Vollrath of Canada, Ltd.
 6320 Danville Road, Unit 1
 Mississauga, Ontario L5T 2L7
 Canada
 Tel: 905.565.1167
 Tel: 800.695.8560
 FAX: 905.565.1168

MODULAR DROP-IN: FIVE WELL HOT

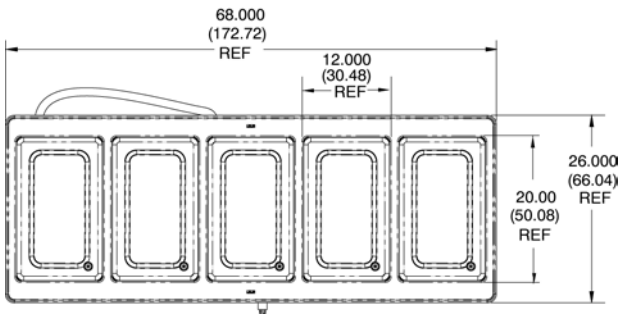
AUTO-FILL OPTION

Field-installed option that maintains constant water level efficiency. Eliminates the need to monitor wells and add water, reducing operating and labor costs. Attaches easily to manifold drain assembly using simple tools. The check valve/siphon prevents cross contamination of drain and potable water lines.

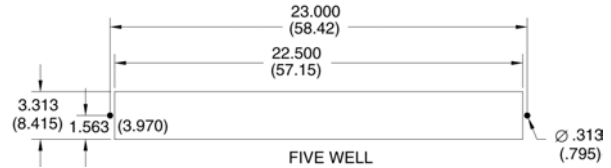


DIMENSIONS

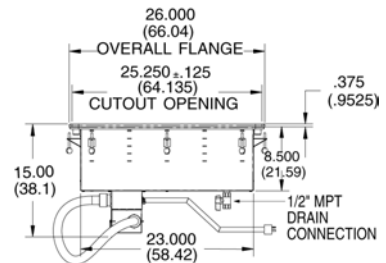
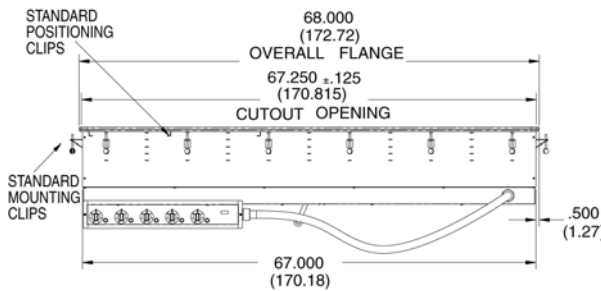
- ❑ Overall Dimension: 68.00" x 26.00" (172.72 cm x 66.04 cm)
- ❑ Cutout Dimensions: 67.25" x 25.25" (170.815 cm x 64.135 cm)
- ❑ Opening cutout must have a 7/8" (2.222 cm) corner radius.



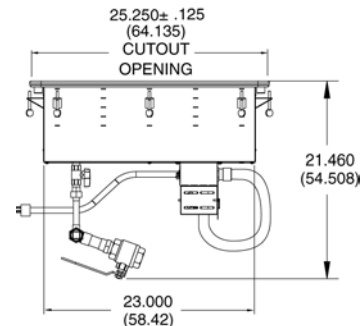
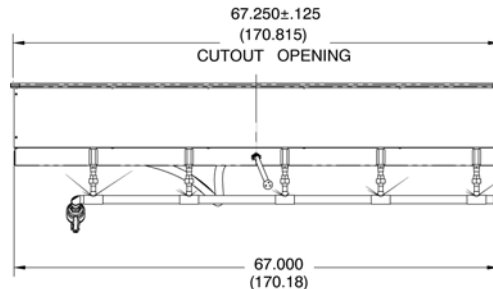
Control Panel Cutout +.063/-0 (+.160/-0) Tolerance



Standard Drain



Manifold Drain

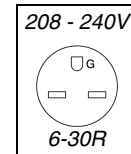
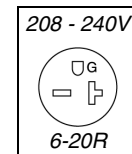


Dimensions shown in inches (centimeters).

ELECTRICAL SPECIFICATIONS

Model	Total Watts	Volts	Nominal Amps	NEMA Plug
36408, -50, -60, -10, -70, -80	2345 - 3125	208 - 240V AC	11.3 - 13.0	6-20P
36408-01, -51, -61, -11, -71, -81	3750 - 5000	208 - 240V AC	18.0 - 20.8	6-30P

Receptacles



www.vollrathco.com

The Vollrath Company, L.L.C.
1236 North 18th Street
Sheboygan, WI 53082-0611
U.S.A.
Main Tel: 800.624.2051
Service Tel: 800.628.0832
FAX: 800.752.5620

Vollrath of Canada, Ltd.
6320 Danville Road, Unit 1
Mississauga, Ontario L5T 2L7
Canada
Tel: 905.565.1167
Tel: 800.695.8560
FAX: 905.565.1168