



DHT-40 or 60, INA/2



Description

Cooker/Mixer Kettle shall be a Groen Model DHT-40 or 60, INA/2 (specify 40- or 60-gallon) stainless steel, self contained 2/3 steam-jacketed unit operating from a gas-heated steam source contained within unit, complete with console-mounted tilt-out inclined agitator mixer.

Construction

Kettle interior shall be of type 316 stainless steel, solid one-piece welded construction. The control console and kettle exterior shall be 304 stainless steel. The kettle body shall be mounted on a heavy-duty stainless steel, combination kettle support tilt trunnion, which, is supported by the polished stainless steel enclosed base. The kettle shall be furnished with heavy-duty reinforced rim with a butterfly-shaped pouring lip for maximum sanitation and ease of pouring. The base shall be provided with stainless steel tubular legs with adjustable flanged feet. The enclosed support base shall contain a self-locking worm and gear tilt mechanism, controls, etc., and shall be of sanitary, drip-proof construction with interior readily accessible for installation or maintenance. Unit includes 2" TDO, 10-Gallon etch markings and double pantry faucet.

Agitator Assembly

Agitator assembly to be designed to thoroughly fold and blend product with gentle lifting action provided by agitator entering kettle body at an angle. Inclined agitator to be stainless steel tubular frame, complete with shovel-type scrapers. Agitator to be readily removable for ease of cleaning and maximum sanitation.

Unit driven by a gear motor through an electronic variable speed control. Motor is completely enclosed-type with a cast iron housing, helical bevel gearing and right angle shaft down. Motor drive is mounted on a stainless steel channel that manually hinges out to the right side of kettle. Unit to be equipped with a spring assist for agitator tilt-out. A positive quick-acting lock and latch mechanism to be provided to secure the agitator when it is in the kettle.

Finish

Kettle interior shall be polished to a 180 emery grit finish. Kettle exterior shall be finished to a bright semi-delux finish, ensuring maximum ease in cleaning and maintaining brilliant appearance.

ASME Code, and CSA Certification

Unit shall be ASME shop-inspected, stamped and registered with the National Board for operation up to a maximum working pressure of 50 PSIG. Kettle shall be design certified by CSA America for use with natural gas or LP gas.

Sanitation

Unit shall be designed and constructed to be NSF listed, meeting NSF requirements.

Self-Contained Steam Source

Kettle shall have an gas-heated (natural or propane), self-contained steam source to provide kettle temperatures of 150°F to approximately 295°F. Unit shall be factory-charged with water and rust inhibitors to ensure long life and minimum maintenance.

Controls

Controls shall include a thermostat, gas control valve with pressure regulator, pressure gauge, water sight glass, a gas regulator valve and electronic ignition. Power ON switch, power ON indicator light, low water indicator light, agitator ON-OFF switch, motor speed control and double-pantry faucet with bracket. Electronic ignition to standing pilot is standard on all models.

Agitator to be of electronic, variable speed control-type capable of operating at any RPM between minimum and maximum settings.

Safety Features

Kettle shall have safety cut-off (turns off heat when tilted to 10° and above), pressure relief valve, high limit pressure switch and low water cut-off, 24Volt control system and agitator safety tilt cut-off.

Options/Accessories

- Disk Strainers (Not to be used with agitator)
- 240, 480 Volt Power Supply (For agitator motor)
- Kettle Brush Kit
- Pan Carrier
- Gallon Master
- Basket Insert

Installation Requirements

Specify natural or propane gas. Unit requires 1/2 " NPT gas line connection, 115Volt, 60Hz power for kettle and 208 Volt (3-phase only) power for agitator motor. No remote steam source required.

Origin of Manufacture

Cooker Mixer shall be designed and manufactured in the United States.

**Stainless Steel
2/3 Steam-
Jacketed
Cooker/Mixer**

**Floor-Mounted
Tilting,
Self-Contained,
Gas-Heated
40-or 60-Gallon
Capacity with
Inclined Agitator**

**Short Form
Groen Model**

DHT-40 or 60, INA/2

(Specify gallons) self-contained, gas-heated, (specify natural or propane) tilting, stainless steel, steam-jacketed cooker mixer, with twin inclined agitator scraper mixer. Base shall house smooth-action positive lock, manual-tilt assembly. 316 stainless steel kettle interior has solid, one-piece, welded construction with heavy-duty reinforced rim and butterfly-shaped pouring lip. Inclined agitator mounted on console with mechanically assisted manual tilt-out and positive quick-action rim lock and latch. Unit is standard with 2" TDO valve and etch marks. Kettle NSF-listed, ASME code constructed for 50 PSI, Kettle UL-listed. 208 Volt, 3 Phase for kettle; 208 Volt, 3 or 1 Phase for agitator motor. Made in USA.



Applications

Pie Fillings
Puddings
Stews
Ground Meat (Any product with delicate particles requiring uniform suspension).
Limited Cook-Chill Applications
(Also see CapKold Literature)



1055 Mendell Davis Drive, Jackson, MS 39272
888-994-7636, fax 888-266-5244

Information contained in this document is known to be current and accurate at the time of printing/creation. Unified Brands recommends referencing our product line websites, unifiedbrands.net, for the most updated product information and specifications.

149005B
Revised 3/06

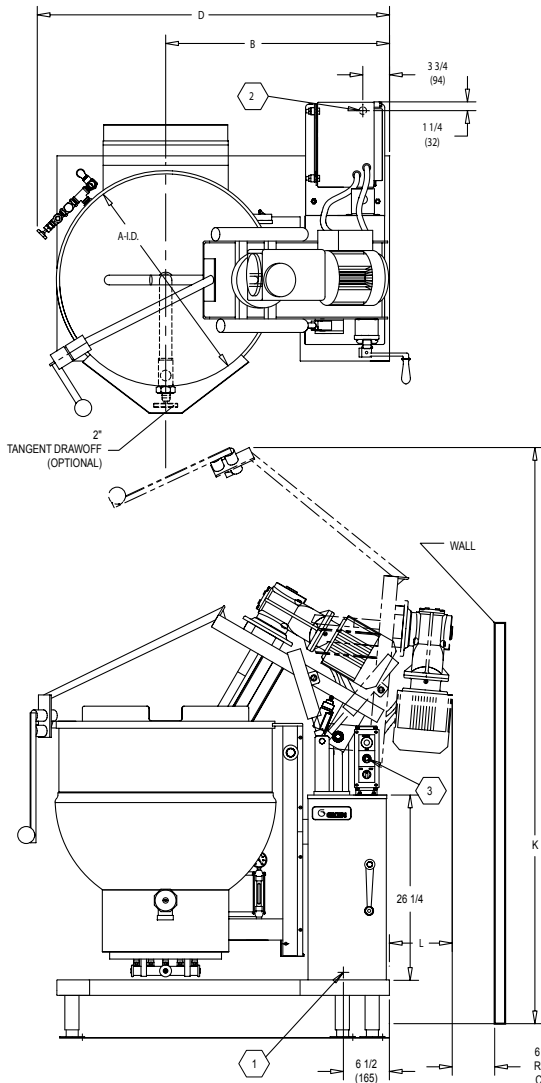


Stainless Steel
2/3 Steam Jacketed
Cooker/Mixer

DHT-40-or-60, INA/2

AGITATOR MOTOR DATA SPECIFICATIONS				
		H.P.	RPM MAIN	RPM SECONDARY
40 GAL	MAXIMUM	1-1/2	54	150
	MINIMUM	3/4	27	75
60 GAL	MAXIMUM	2	46	120
	MINIMUM	1	23	60

TABLE OF DIMENSIONS				
MODEL	40 GAL. 150 L		60 GAL. 230 L	
DIM.	INCH	MM	INCH	MM
A	26	660	30	762
B	28-1/2	724	31-5/8	803
C	31	787	33	838
D	48	1219	54	1372
E	58-7/8	1495	62-1/8	1578
F	39-1/2	1003	42-3/4	1086
G	11-1/4	286	14-1/2	368
J	30-1/2	775	35-1/2	902
K	78-1/8	1984	81-3/8	2067
L	6-7/8	175	8-7/8	225
M	14-1/4	362	12-3/8	314



NOTES:

1. ELECTRICAL POWER CONNECTIONS, KETTLE
1-3/4" DIAMETER HOLE.
2. ELECTRICAL POWER CONNECTION, AGITATOR
1-3/4" DIAMETER HOLE.
3. AGITATOR MOTOR SPEED SELECTOR SWITCH.
4. CONTROL BOX MAY BE REMOTELY MOUNTED
(BY CUSTOMER) IF DESIRED.

