

Item No. _____

Quantity _____



BEVERAGE-AIR

Commercial Refrigeration Equipment General Specifications

29" DEPTH WORKTOP FREEZER FOOD PREPARATION SERIES

MODELS:
WTF27
WTF48

WTF-SERIES WORKTOP UNITS

Versatile, compact (29" deep) models with stainless steel work tops and frozen storage of food products. Working height is 35-1/2".

Cabinet construction

Heavy duty construction includes #3 finish stainless steel on front, sides, door(s) and grille. Worktop is stainless steel with 4" high removable backsplash. Cabinet back and bottom are galvanized steel. Interior liner is made of anodized aluminum for longer lasting corrosion protection. Interior thermometer is standard.

Cabinets are insulated with foamed-in-place polyurethane insulation of 2" minimum thickness. Work tops are 2 1/2". Doors are gravity self-closing mounted to cabinet on cam lift hinges with 120 degree stay open feature. Door openings include low wattage, anti-condensate heaters. A plug-in type vinyl magnetic gasket is attached to each door for positive seal. Convenient, contoured, pull handle is made of black anodized aluminum. An 8' cord set is provided with 115 volt models. Interior arrangement includes 2 steel wire epoxy coated shelves behind each door, adjustable in 1/2 inch increments.

Refrigeration:

Forced air refrigeration systems use capillary tube to meter refrigerant. Automatic electric defrost is standard. Unique front venting of air through grilles located below doors permits units to be installed against back walls and even on curbs. Automatic (non-electric) condensate evaporator is provided.



WTF27



WTF48



Made in USA

<http://www.Beverage-Air.com>

<http://CCR.Carrier.com>



PO Box 5932, Spartanburg, SC 29304
1-800-845-9800 Fax No. 1-864-582-5083

Model Specified _____ Project # _____

Location _____ Quantity _____

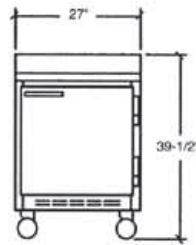


BEVERAGE-AIR

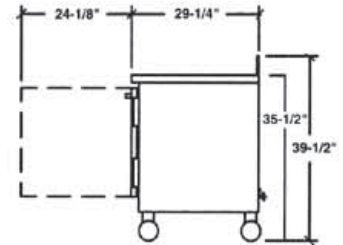
Standard Worktop Freezer Cabinets

Models: WTF27 / WTF48

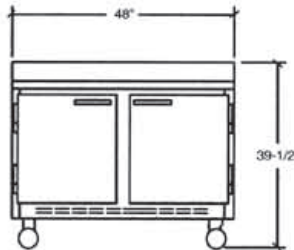
MODEL	WTF27	WTF48
DIMENSIONAL DATA		
Net Capacity (cubic ft.)	6.2	11.8
Net Capacity (liters)	175	334
Width overall (inches)	27"	48"
Width overall (mm)	685	1219
Depth overall (inches) - Less handle	29 ¹ / ₄ "	29 ¹ / ₄ "
Depth overall (mm) - Less handle	743	743
Height overall on 6" casters	39 ¹ / ₂ "	39 ¹ / ₂ "
Height overall (mm) on 6" casters	1003	1003
Depth with Door Open 90°	53 ³ / ₈	50 ³ / ₈
Clear Door Opening	22 ¹ / ₂ x 21 ¹ / ₂ "	19 ¹ / ₂ x 21 ¹ / ₂ "
Number of Shelves	2	4
Number of doors	1	2
ELECTRICAL DATA		
Volts	115	115
Full load amperes 115/60/1	6.0	7.0
REFRIG. DATA		
Refrigerant	404A	404A
Horsepower	1/4	1/3
WEIGHT DATA		
Gross Weight (Crated lbs)	165	250
Gross Weight (Crated kg)	75	113



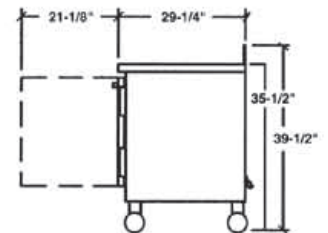
WTF-27 Front



WTF-27 End



WTF-48 Front



WTF-48 End



Available From:



BEVERAGE-AIR

PO Box 5932 • Spartanburg, SC • 29304 • USA
 1-800-845-9800 • Fax No. 1-864-582-5083
 www.Beverage-Air.com