

Item No. _____

Quantity _____



BEVERAGE-AIR

Commercial Refrigeration Equipment General Specifications

Shallow depth back bar, self-contained refrigerators come in two widths of 48" and 72". Two heights include 34" with standard galvanized steel top for under shelf application and 36" when adapted with a stainless steel top. Depth is 23" from face of door to back of cabinet. Handle projects 1/2". Both solid door and glass door models are readily available. Locks are standard with solid door models, optionally available with glass doors.

Standard, cabinet exterior construction includes attractive, wear resistant vinyl on steel in two choices of finish (black and wood grain) with black the most popular. Doors are self-closing and include magnetic gaskets for positive seal.

Standard interior construction utilizes galvanized steel for walls and ceiling. Reinforced floor and doorsills are made from heavy-duty stainless steel to provide long lasting service. Interior lighting is incandescent with solid doors and florescent with glass doors. Manual light switch is standard.

Refrigeration is fully accessible behind grille to right side of cabinet. Evaporator located above condensing unit permits full use of interior spaces. Forced air is projected the length of cabinet across the ceiling. Keg storage is maximized in lieu of shelf storage when required. Refrigerant R134a is CFC free in compliance with environmental concerns.

Cabinet is insulated with foamed-in-place polyurethane, which is also CFC free in compliance with environmental safety concerns. Insulation adds structural strength to the cabinet. Condensate elimination is automatic and non-electric. A cord and plug are provided for electrical connection.

BEER EQUIPMENT BACK BARS: SHALLOW DEPTH BACK BAR STORAGE & DISPLAY CABINETS BB SERIES

MODELS:
BB48
BB72
BB48G
BB58G
BB68G
BB72G
BB78G
BB94G



Made in USA
<http://www.Beverage-Air.com>
<http://CCR.Carrier.com>

Carrier BEVERAGE-AIR
PO Box 5932, Spartanburg, SC 29304
1-800-845-9800 Fax No. 1-864-582-5083

Model Specified _____ Store# _____

Location _____ Quantity _____

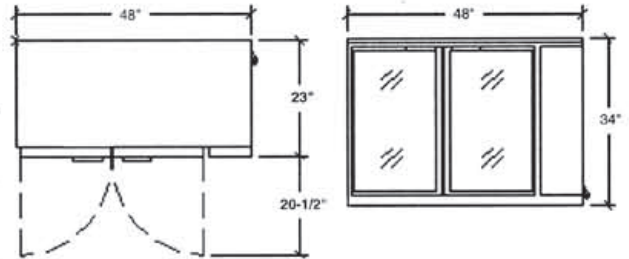


BEVERAGE-AIR

Shallow Depth Back Bar Refrigerators

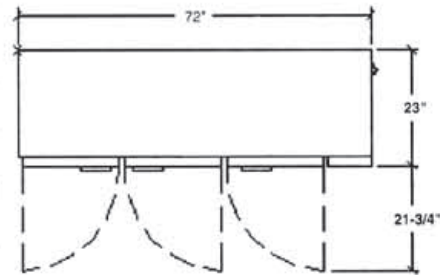
Models: BB48 / BB72 / BB48G / BB58G / BB68G / BB72G / BB78G / BB94G

MODEL	BB48	BB72	BB48G	BB58G	BB68G	BB72G	BB78G	BB94G
DIMENSIONAL DATA								
Net Capacity (cubic ft.)	12.4	20.6	12.4	23.7	28.0	20.6	33.3	39.2
Net capacity (liters)	351	583	351	671	792	583	943	1110
Length Overall (inches)	48"	72"	48"	59"	69"	72"	79"	95"
Length Overall (mm)	1219	1828	1219	1498	1752	1828	2006	2413
Depth (in.) less handle	23½"	23½"	23½"	28"	28"	23½"	28"	28"
Depth (mm) less handle	597	597	597	711	711	597	711	711
Height Overall (inches)	34"	34"	34"	37¼"	37¼"	34"	37¼"	37¼"
Height Overall (mm)	863	863	863	946	946	863	946	946
Depth with Door Open 90°	43½"	44¾"	43½"	49⅝"	49⅝"	44¾"	49⅝"	49⅝"
Clear Door Width	17⅞"x29⅞"	18⅞"x29⅞"	17⅞"x29⅞"	21x31	21x31	18⅞"x29⅞"	21x31	21x31
Number of Shelves	4	6	4	4	4	6	6	6
Number of Kegs (straight wall)	2	3	2	2	3	3	4	5
ELECTRICAL DATA								
Full Load Amperes 115/60/1	7.2	7.3	6.8	7.2	7.2	.5	7.2	7.2
Full Load Amperes 220/50/1	3.9	3.9	3.6	3.9	3.9	.3	3.9	3.9
REFRIGERATION DATA								
Refrigerant	134a	134a	134a	134a	134a	134a	134a	134a
Horsepower	⅓	¼	¼	⅓	⅓	¼	⅓	⅓
WEIGHT DATA								
Gross Weight (Crated lbs)	245	326	245	315	372	374	405	465
Gross Weight (Crated kg)	111	148	111	143	168	169	183	211

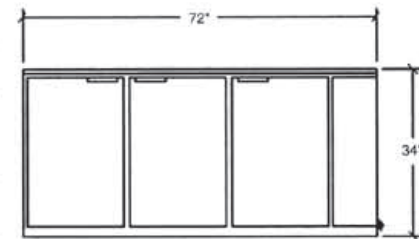


BB48 Top

BB48 Front



BB72 Top



BB72 Front



Available From:



BEVERAGE-AIR

PO Box 5932 • Spartanburg, SC • 29304 • USA
 1-800-845-9800 • Fax No. 1-864-582-5083
 www.Beverage-Air.com