



BEVERAGE-AIR

Item No. _____

Quantity _____

**Commercial Refrigeration Equipment
General Specifications**

Back bar storage cabinets come in four basic, self-contained models up to 95" wide. Overall height is 37 1/4". Depth is 27" from face of door to back of cabinet. Handles project 1 3/4". Solid doors are standard. One size self-contained, end mount model (BB58E) and two remote models (BB58R and BB78R) complete the 27" base series of back bars.

Standard, cabinet exterior construction includes attractive, wear resistant vinyl on steel in two choices of finish (black and wood grain) with black the most popular. Top is made of stainless steel. Doors are self-closing and include key locks. Magnetic door gaskets provide positive door sealing.

Standard interior construction utilizes galvanized steel for walls and ceiling. Reinforced floor and doorsills are made from heavy-duty stainless steel to provide long lasting service. Interior, incandescent, lighting is standard with manual on/off switch.

Cabinet is insulated with foamed-in-place polyurethane, which is CFC free to meet environmental standards. Insulation also enhances structural strength of cabinet. Forced-air refrigeration system uses R134a refrigerant, which is also CFC free for compliance with environmental safety concerns. Condensate elimination is automatic and non-electric. A cord and plug are provided for electrical connection.

**BEER EQUIPMENT
BACK BARS
STORAGE CABINET
(27" BASE)
BB SERIES**

**MODELS:
BB58 / BB58R
BB58E
BB68 / BB78 /
BB78R / BB94**

BB58



BB78



BB94



Made in USA
<http://www.Beverage-Air.com>
<http://CCR.Carrier.com>



PO Box 5932, Spartanburg, SC 29304
1-800-845-9800 Fax No. 1-864-582-5083

Model Specified _____ Store# _____

Location _____ Quantity _____

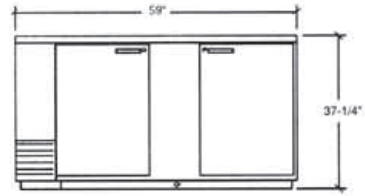


BEVERAGE-AIR

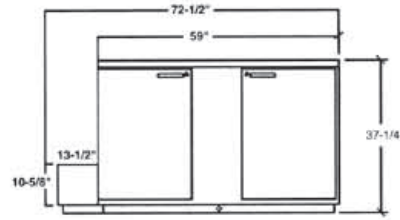
Back Bar Storage Equipment

Models: BB58 / BB58E / BB58R / BB68 / BB78 / BB78R / BB94

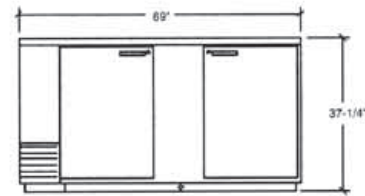
MODEL	BB58	BB58E	BB58R	BB68	BB78	BB78R	BB94
EXT. DIMENSIONAL DATA							
Net Capacity (cubic ft.)	23.7	24.6	24.6	28.0	33.3	33.3	39.2
Net Capacity (liters)	671	696	696	792	943	943	1110
Width Overall (inches)	59"	72 1/2"	59"	69"	79"	79"	95"
Width Overall (mm)	1498	1841	1498	1752	2006	2006	2413
Depth Overall (inches) less handle	27"	27"	27"	27"	27"	27"	27"
Depth Overall (mm) less handle	686	686	686	686	686	686	686
Height Overall (inches)	37 1/4"	37 1/4"	37 1/4"	37 1/4"	37 1/4"	37 1/4"	37 1/4"
Height Overall (mm)	946	946	946	946	946	946	946
Depth with Door Open 90°	49 5/8"	49 5/8"	49 5/8"	49 5/8"	49 5/8"	49 5/8"	49 5/8"
Clear Door Width (inches)	21 x 31	21 x 31	21 x 31	21 x 31	21 x 31	21 x 31	21 x 31
Number of Shelves	4	4	4	4	6	6	6
Number of Kegs (straight wall)	2	3	3	3	4	5	5
ELECTRICAL DATA							
Full Load Amperes 115/60/1	7.2	7.2	0.5	7.2	7.2	0.5	7.2
Full Load Amperes 220/50/1	3.9	3.9	3.9	3.9	3.9	3.9	3.9
REFRIGERATION DATA							
Refrigerant	134a	134a	134a	134a	134a	134a	134a
Horsepower	1/3	1/3	remote	1/3	1/3	remote	1/3
WEIGHT DATA							
Gross Weight (Crated lbs)	315lbs	365lbs	284lbs	372lbs	405lbs	383lbs	465lbs
Gross Weight (Crated kg)	143	165	128	168	183	173	211



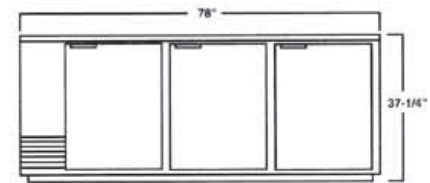
BB50 / BB58R Front



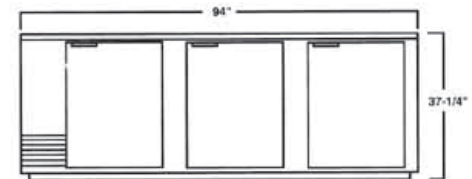
BB58E Front



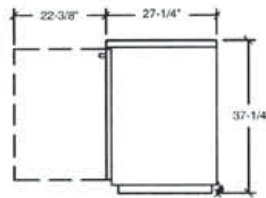
BB68 Front



BB78 / BB78R Front



BB94 Front



BB58, 58E, 58R, 68, 78, 78R, 94
Common End View



Available From:



BEVERAGE-AIR

PO Box 5932 • Spartanburg, SC • 29304 • USA
1-800-845-9800 • Fax No. 1-864-582-5083
www.Beverage-Air.com