



BEVERAGE-AIR

PO Box 5932, Spartanburg, SC 29304
1-888-845-9800 Fax# 1-864-582-5083
<http://www.Beverage-Air.com>

Commercial Refrigeration Equipment General Specification

BB GLASS DOOR — BACK BAR REFRIGERATOR WITH SLIDING GLASS DOORS

Back bar storage cabinet with sliding glass doors comes in a basic, self-contained 48" or 58" wide model.

CABINET CONSTRUCTION

Standard, cabinet exterior construction includes attractive, wear resistant vinyl on steel in black finish. Galvanized sub top standard. Sliding glass doors are self-closing and includes a stay-open feature and lock.

Standard interior construction utilizes galvanized steel walls and ceiling. Reinforced floor made from heavy-duty stainless steel to provide long lasting service. Interior, fluorescent lighting is standard.

Environmentally friendly foamed-in-place CFC and HCFC-free polyurethane insulation enhances the structural strength of the cabinet and helps increase energy efficiency.

REFRIGERATION

Refrigeration system uses R134a refrigerant, which is CFC and HCFC-free for compliance with environmental safety concerns.

Condensate elimination is automatic and non-electric.

ELECTRICAL

Units are wired at factory and ready for connection to a 115/60/1 phase, 15 amp dedicated outlet. 8' long cord and plug set included.

SPECIAL FEATURES

- Sliding glass doors
- Door lock
- Door hold-open feature
- 2-pane lowE door glass

Item No. _____
Quantity _____

BEER EQUIPMENT SLIDING GLASS DOOR BACK BAR REFRIGERATORS BB-GSY SERIES

MODELS:
BB48GSY-1-B
BB58GSY-1-B



BB48GSY-1-B



BB58GSY-1-B



*Note: Not all markings may apply to all model variations.

Available From:

Model Specified _____	Store# _____
Location _____	Quantity _____



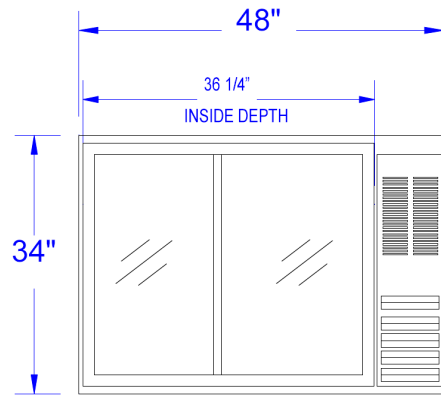
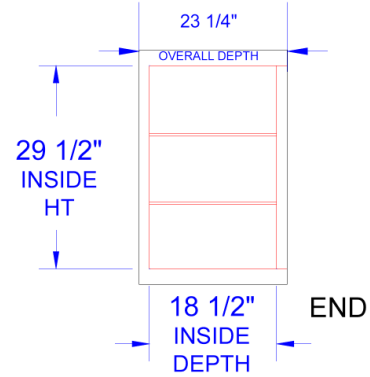
BEVERAGE-AIR

Back Bar Glass Door Refrigerators—Sliding Glass Doors

Models: BB48GSY-1-B, BB58GSY-1-B

MODEL	BB48GSY-1-B	BB58GSY-1-B
EXTERNAL DIMENSIONAL DATA		
Length Overall (inches)	48"	59"
Length Overall (mm)	1219	1499
Depth Overall (inches)	23 1/4"	28 3/16"
Depth Overall (mm)	591	716
Height Overall—(inches)	34"	37 1/4"
Height Overall—(mm)	864	946
Number of doors	2	2
INTERNAL DIMENSIONAL DATA		
NET Capacity (cubic ft.)	12.1	23.8
NET Capacity (Liters)	343	672
Internal Length Overall (inches)	36"	55"
Internal Length Overall (mm)	914	1397
Internal Depth Overall (inches)	18 1/2"	23"
Internal Depth Overall (mm)	470	584
Internal Height Overall (inches)	29 1/2"	32"
Internal Height Overall (mm)	749	813
Number of Shelves	4	4
Number of Kegs (straight wall)	2	2
ELECTRICAL DATA		
Full Load Amperes 115/60/1	5	7.4
ENERGY CONSUMPTION (KWH)		
	3.74	4.37
REFRIGERATION DATA		
Horsepower	1/4	1/3
WEIGHT DATA		
Gross Weight (Crated lbs)	245	382
Gross Weight (Crated kg)	111	173

PLAN VIEWS



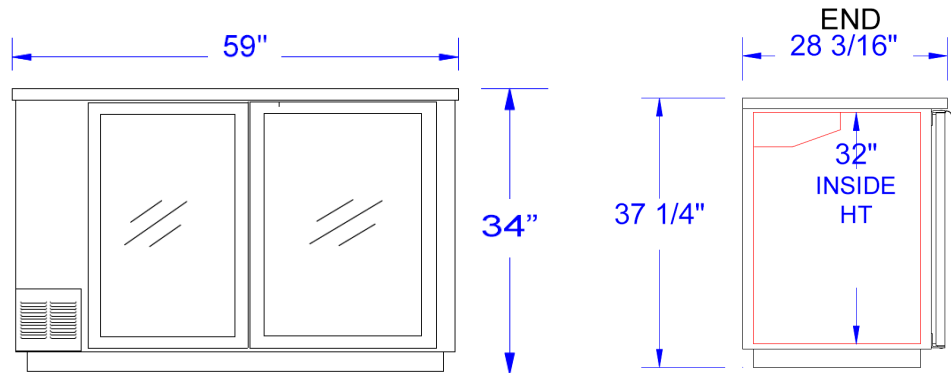
FRONT
BB48



*Note: Not all markings may apply to all model variations.

ELECTRICAL CONNECTION

Units are pre-wired at factory and include 8' long cord and plug set.



BB58 FRONT

BEVERAGE-AIR® CORPORATION

700 Buffington Road • PO Box 5932 • Spartanburg, SC 29304 USA • (864) 582-8111 • Fax (864) 582-5083 • (888) 845-9800 • www.beverage-air.com

Specifications are subject to change without prior notice. 01/10