



# Avenger™ LT

Project \_\_\_\_\_  
 Item \_\_\_\_\_  
 Quantity \_\_\_\_\_  
 CSI Section 11400 \_\_\_\_\_  
 Approval \_\_\_\_\_  
 Date \_\_\_\_\_

## Models

- Avenger™ LT



## Standard Features

- Automatic fill
- Push button start
- Labyrinth type door design
- Automatic pumped drain for floor and wall drain installations
- Pre-installed water pressure regulator
- Recirculating wash and rinse
- Stainless steel wash/rinse pump
- Electro mechanical components
- Manual override for extended wash and deliming
- Simplified controls allow easy access for operation and service
- Door safety switch
- Pumped drain
- One (1) each peg and combination rack included
- Above water scrap tray
- Built-in chemical pumps

## Optional Features

- Scaltrol
- Water Hammer Arrestor
- Back Panel

## Accessory Items

- 36 Compartment Racks 4-1/8", 5-5/8", or 7" (105 mm, 143 mm, 178 mm)
- Combination Rack
- Peg Rack
- Machine stand 6" or 18" high (152 mm or 457 mm)

## Specifications

Uses only 1.2 gallons (4.5 liters) of water per rack

Uses 28.8 gallons (109 liters) of water per hour

Cleans 24 racks per hour

Two minute automatic cycle

Powerful 3/4 HP wash pump motor

Fresh water rinse eliminates wash water contamination

Air-insulated between body and stainless steel housing

Unique timer allows the machine to be customized for extended cycle times

304 stainless steel construction





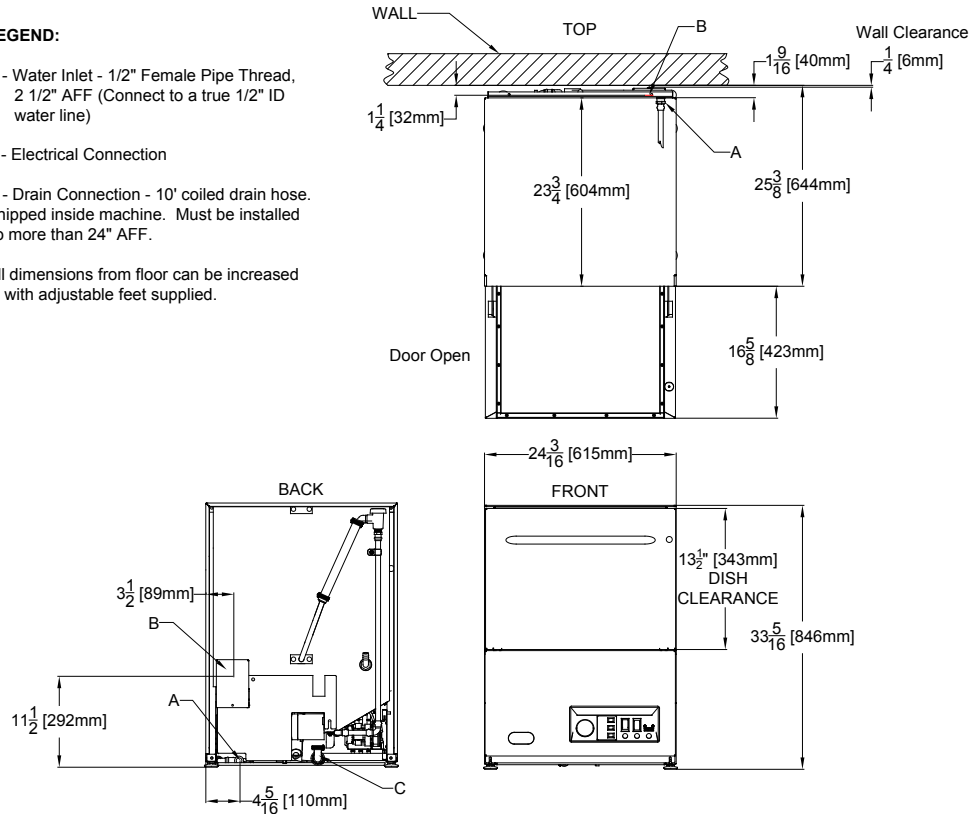
**LEGEND:**

A - Water Inlet - 1/2" Female Pipe Thread, 2 1/2" AFF (Connect to a true 1/2" ID water line)

B - Electrical Connection

C - Drain Connection - 10' coiled drain hose. Shipped inside machine. Must be installed no more than 24" AFF.

All dimensions from floor can be increased 1" with adjustable feet supplied.



**MACHINE DIMENSIONS**

INSIDE CLEARANCE HEIGHT	INSIDE CLEARANCE WIDTH	INSIDE CLEARANCE DEPTH	DOOR OPEN DEPTH	WALL CLEARANCE (MINIMUM)
13-1/2" (343 mm)	20" (508 mm)	20" (508 mm)	42" (1067 mm)	1/4" (6 mm)

**SHIPPING DIMENSIONS**

WEIGHT	CLASS	CUBE	HEIGHT	WIDTH	DEPTH
248 lbs (112 kg)	92.5	19.8 cu. ft.	38" (965 mm)	30" (762 mm)	30" (762 mm)

**APPROXIMATE TOTAL LOAD AMPS**

115/60/1	10.0
----------	------

**OPERATING CAPACITY**

Racks per hour	24
Dishes per hour	600
Glasses per hour	600

**ELECTRICAL REQUIREMENTS**

Wash pump HP	3/4
--------------	-----

**OPERATING CYCLE**

Wash cycle (Seconds)	56
Drain time (Seconds)	29
Rinse time (Seconds)	35
Total cycle (Seconds)	120

**WATER REQUIREMENTS**

Gallons per rack	1.2 gal 4.5 liters
Gallons per hour	28.8 gal 109 liters
Flow pressure (PSI)	15 - 25
Waterline size (IPS)	1/2
Drainline size OD	1 3/8

**OPERATING TEMPERATURES**

Wash	140 °F / 43.3 °C
Rinse	140 °F / 43.3 °C

HOW TO SPECIFY - EXAMPLE:  
Avenger™ LT

Highway 25E  
P. O. Box 1060  
Barbourville, KY 40906

Tel: 606-523-9795  
Tel: 1-888-800-5672  
Fax: 606-523-9196  
E-mail: info@jacksonmsc.com

www.jacksonmsc.com  
7610-003-34-04 (04/07)



We reserve the right to change specifications appearing in this bulletin without incurring any obligation for equipment previously or subsequently sold.