

DUKE®

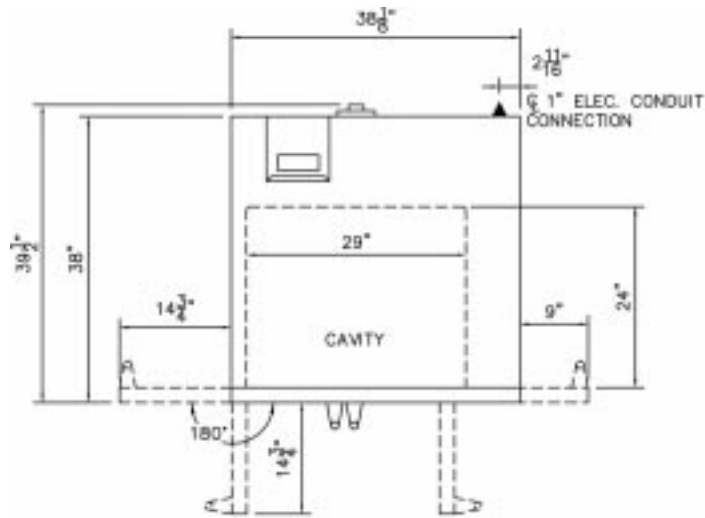
DUKE CONVECTION OVENS
 "E" SERIES - SINGLE - ELECTRIC

□ E101-E - Single section, standard depth

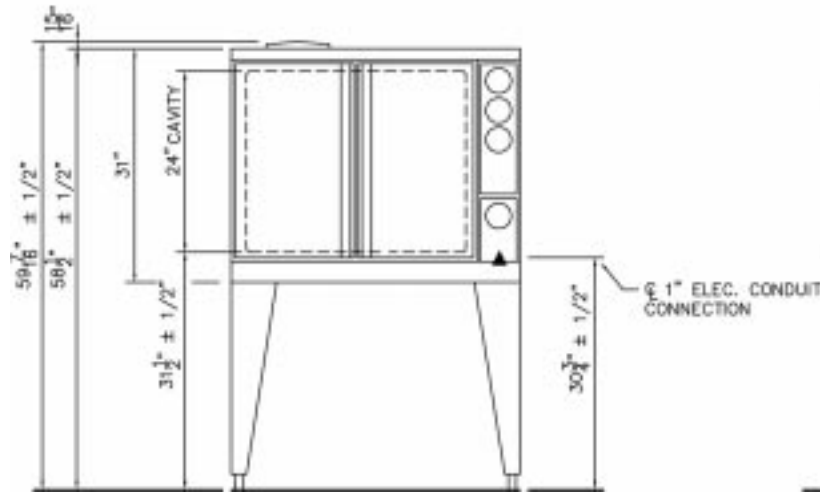
A.I.A. File No. 35-C-13

Catalog No. DCO-EELECS

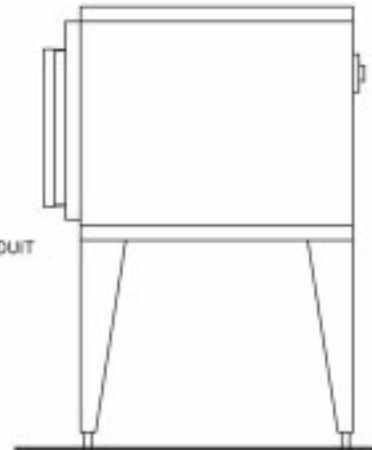
DUKE CONVECTION OVENS - "E" SERIES - SINGLE - ELECTRIC



TOP VIEW



FRONT VIEW



SIDE VIEW

Electrical Specifications - Per Section

	208V Amps	240 V Amps	408 V Amps	KW
1 Phase	52.8	45.8	n/a	11.0
3 Phase	30.5	26.5	13.3	11.0

▲ - Electric connection point

DIMENSIONS:

Freight Class: 85

Model	Depth front view		Width		Height top view		Cube ft. crated	Weight	
	in.	cm	in.	cm	in.	cm		lbs.	kg
E101-E	39-1/2	100.3	38	96.5	60	152.4	59.6	505	229.6



"Your Solutions Partner"

DUKE MANUFACTURING CO.
 P. O. Box 5426
 St. Louis, MO 63147-0230

800.735.3853 Toll Free
 314.231.1130 In Missouri
 314.231.5074 Fax
 www.dukemfg.com

10/99

Printed in U.S.A.
 ©1999, Duke Manufacturing Co.

Specifications subject to change

Duke Specifications

F.O.B. Sedalia, Missouri 65301



E101-E

OPTIONS:

- 2-speed fan
- Casters
- Glass doors
- Interior lights

AGENCY LISTINGS:



DUKE MANUFACTURING CO.
P. O. Box 5426
St. Louis, MO 63147-0230

800.735.3853 Toll Free
314.231.1130 In Missouri
314.231.5074 Fax
www.dukemfg.com



"Your Solutions Partner"

PROJECT INFORMATION:

PROJECT: _____
ITEM: _____
QUANTITY: _____

MODEL:

Duke Convection Ovens
"E" Series - Single - Electric

- E101-E** - Single section, standard depth

STANDARD FEATURES:

- 5 racks
- Porcelain interior
- Stainless front
- 27" angular painted legs

OVEN SECTIONS:

- Painted sides, top
- 50/50 independent stainless steel doors
- 1-1/2" insulation on bottom, sides, back
- 3" insulation on top

OVEN CONTROLS:

- Power off/cook switch
- Dial type thermostat - 200°-500°F
- 1-hour dial timer, electric buzzer

SHORT FORM SPECIFICATIONS:

Duke Convection Ovens - "E" Series, Electric, Single Section. Unit shall have stainless steel exterior front, painted sides and top. Bottom, back and sides to be fully insulated with 1-1/2" thick board type insulation, top to have 3" thick insulation. Interior shall be porcelain enameled interior, with 7/8" radius, coved corners. Each section to include five oven racks. Each oven section shall be heated with 11 KW electric heating elements that encircle the blower wheel for even heat distribution. Fuse protected against overload. Unit to be completely front serviceable. Controls shall be: Power off/cook switch, dial type thermostat to operate from 200°-500°F, and a 1-hour dial timer with electric buzzer. Doors shall be solid 50/50 independent stainless steel. Insulated, and hinged on 5/8" solid stainless steel shafts with oil impregnated bronze bushings for each door. Door to have roller style latch and catch mechanism. Legs shall be angular, painted, 27" high, with adjustable feet. Units shall have the following options: 2-speed fan, casters, door windows and lights. Limited 1 year warranty on parts and labor.