



T&S BRASS AND BRONZE WORKS, INC.

2 SADDLEBACK COVE / P.O. BOX 1088 / TRAVELERS REST, SC 29690

PHONE 800-476-4103

FAX 864- 834-3518



REG.#A2601
ISO #9002

Model No.

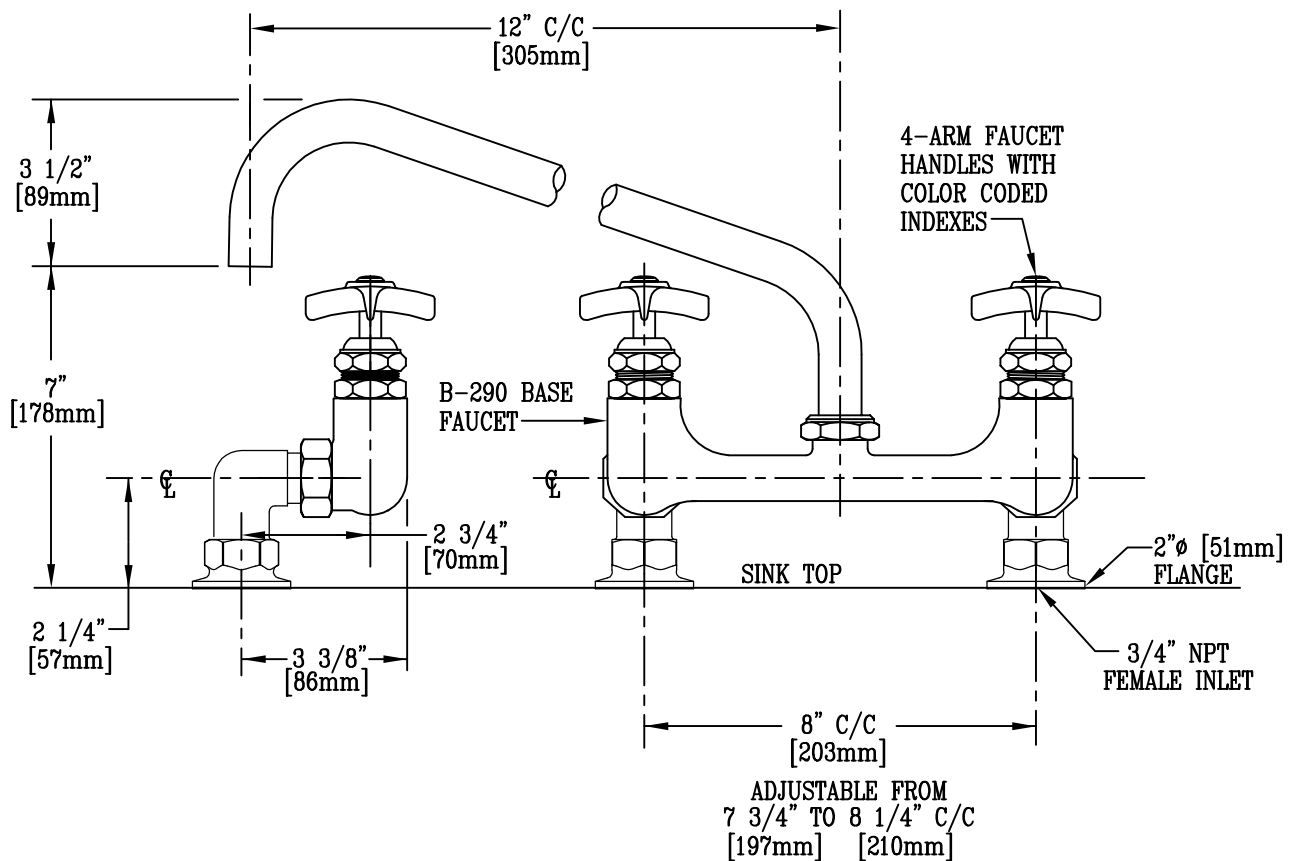
B-0293

Item No.:

Job Name:

Architect/Engineer Approval:

Notes:



NOTE : DRILL 1 1/4" ϕ [32mm] HOLES ON 8" C/C IN SINK TOP.

NSF STANDARD 61, SECTION 9 CERTIFIED.

Product Description:

KETTLE & POT SINK MIXING FAUCET WITH 12" SWING NOZZLE, 4-ARM KITCHEN HANDLES, & 3/4" NPT INLETS

Drawn:

LEL

Checked

JKD

Scale:

1 : 4

Approved

MVW

Date:

9/11/02