

# SCOTSMAN

TOUCHFREE® AIR COOLED FLAKE ICE MAKER / DISPENSER



## MDT3F12

### 24 HOUR ICE PRODUCTION

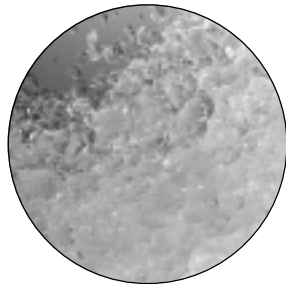
| Based on<br>Air/Water<br>Temperatures | Air-Cooled          |                     |
|---------------------------------------|---------------------|---------------------|
|                                       | 70°/50°<br>lbs./kg. | 90°/70°<br>lbs./kg. |
| MDT3F12-1                             | 392/178             | 294/133             |

### YOU'LL VALUE OUR IMPROVED TOUCHFREE® ICE MAKER / WATER DISPENSERS

- Sleek, European design with attractive rounded corners and informative instruction labels.
- Up to 25% less fan noise allows installation of the unit in the quietest hallways.
- Improved dispensing with easier access and room for most containers.
- TouchFree actuation provides convenient one-hand operations and eliminates the risk of cross contamination.
- Flexible utility location.
- Makes and dispenses flaked ice

### WARRANTY *See your dealer for complete warranty details.*

- 2 years parts on all components.
- 2 years labor on all components.
- 5 years parts on compressor.



#### FLAKED ICE

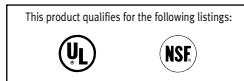
Chewable and slow-melting.  
Helps to cool drinks rapidly  
and to stay cool longer.



#### WATER/ICE SELECTION SWITCH

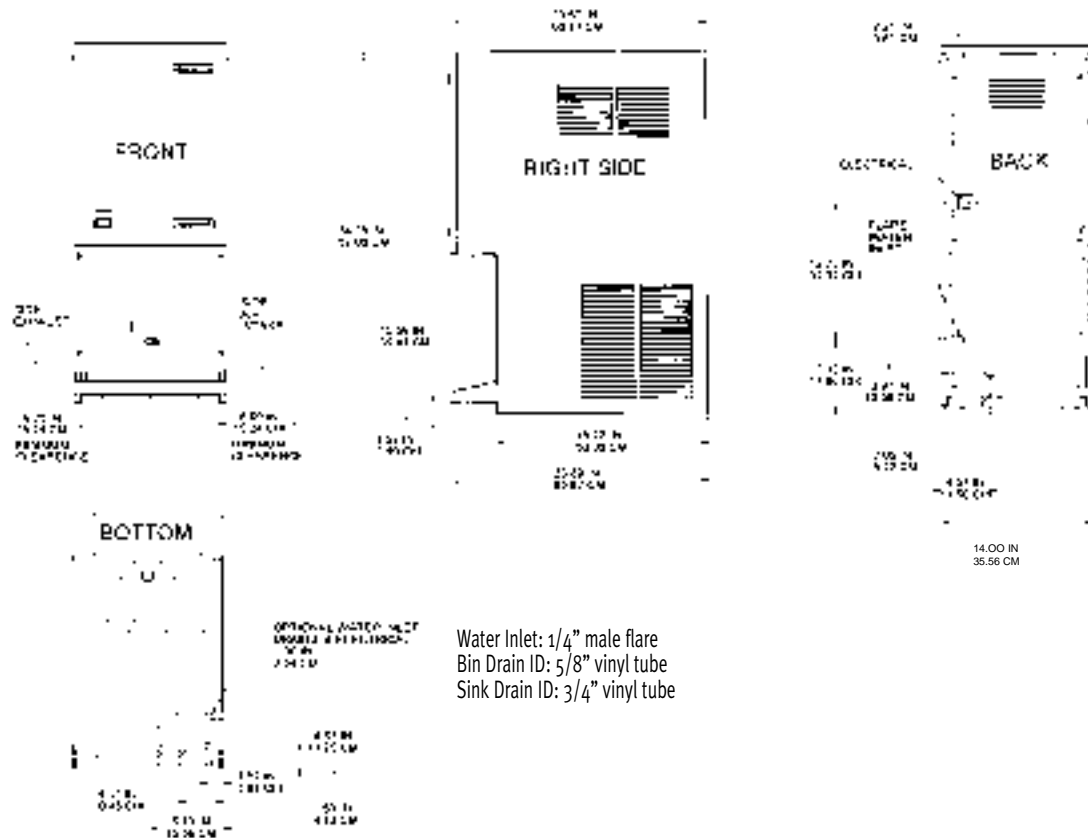
Select ice only or ice  
and water at the touch  
of a switch, conveniently  
located on front panel.

CERTIFIED  
**ISO**  
9001:2000



 **Scotsman**®

# Ice Maker/Dispenser Specifications



INSTALLATION NOTE: Allow 6" minimum space at sides and back for ventilation and utility connections.

All models: Dimensions: W x D x H Unit: 14" x 23 3/4" x 34 1/4" Shipping Carton: 17" x 26" x 39 3/4"

| Model Number | Condenser Unit | Bin Cap. lbs./kg. | Basic Electrical Volts/Hz/Phase | Max. Fuse Size or HACR Circuit Breaker | Comp. HP | Circuit Wires | Min. Circuit Ampacity | Shipping Weight lbs./kg. | Power Consumption KWH/100 lbs. 90°F/70° F | Water Usage Gallons/100 lbs. |                      |
|--------------|----------------|-------------------|---------------------------------|--|----------|---------------|-----------------------|--------------------------|---|------------------------------|----------------------|
|              |                |                   |                                 |  |          |               |                       |                          |   | Potable 90°F/70° F           | Condenser 90°F/70° F |
| MDT3F12A-1A  | AIR            | 12/5.4            | 115/60/1                        | 15                                     | 1/2      | 2             | 9.4                   | 155/70                   | 5.6                                       | 12                           | -                    |

All units with stainless steel finish.  
Refrigerant: R-134A.

OPTIONS:  
KWB4: Wall mounting kit.

## IMPORTANT OPERATING REQUIREMENTS:

|                    | Minimum      | Maximum        |
|--------------------|--------------|----------------|
| Air Temperatures   | 50°F (10°C)  | 100°F (37.7°C) |
| Water Temperatures | 40°F (4.4°C) | 100°F (37.7°C) |
| Water Pressures    | 20 PSIG      | 80 PSIG        |
| Electrical Voltage | -5%          | +10%           |

## ICE VENDING CAPACITY

PEAK VENDS PER HOUR\*

| Model    | Bin Storage lb./kg. | 1 Hour Recovery Cap. lb./kg. | Number of Vends Per Hour from Full Bin + Recovery = Total Vends |                    |                       |               |                    |                       |               |                    |                       |               |                    |                       |
|----------|---------------------|------------------------------|---|--------------------|-----------------------|---------------|--------------------|-----------------------|---------------|--------------------|-----------------------|---------------|--------------------|-----------------------|
|          |                     |                              | 2 fl. oz. Bin   |                    |                       | 4 fl. oz. Bin |                    |                       | 6 fl. oz. Bin |                    |                       | 8 fl. oz. Bin |                    |                       |
|          |                     |                              | 2 fl. oz. Bin   | 2 fl. oz. Recovery | Total 2 fl. oz. Vends | 4 fl. oz. Bin | 4 fl. oz. Recovery | Total 4 fl. oz. Vends | 6 fl. oz. Bin | 6 fl. oz. Recovery | Total 6 fl. oz. Vends | 8 fl. oz. Bin | 8 fl. oz. Recovery | Total 8 fl. oz. Vends |
| MDT3F12A | 12/5                | 16/7                         | 192   | + 261              | = 453                 | 96            | + 131              | = 227                 | 64            | + 87               | = 151                 | 48            | + 65               | = 113                 |

1 lb. apx. = 32 fl. oz.

\*Based on 70° Air and 50° Water Temperatures.

Scotsman's ice machines are not designed for outdoor installations.

Machine requires voltage indicated on rating name plate. Failures caused by improper voltage are not considered factory defects. Extended periods of operation at temperatures exceeding limitations constitutes misuse under the terms of Scotsman Manufacturer's Limited Warranty, resulting in a loss of warranty coverage. Specifications and design are subject to change without notice.

Consult Your Local SCOTSMAN Representative At:

**YOU'LL VALUE THE DIFFERENCE™**

775 Corporate Woods Parkway • Vernon Hills, IL 60061 • 1-800-SCOTSMAN • Fax: (847) 913-9844  
Visit our website at: [www.scotsman-ice.com](http://www.scotsman-ice.com) • E-mail: [customer.service@scotsman-ice.com](mailto:customer.service@scotsman-ice.com)

