



PROJECT _____
 ITEM NUMBER _____
 QUANTITY _____ DATE _____
 APPROVAL _____

N8800

Drop-In Single-Tank Electric Hot Food Wells

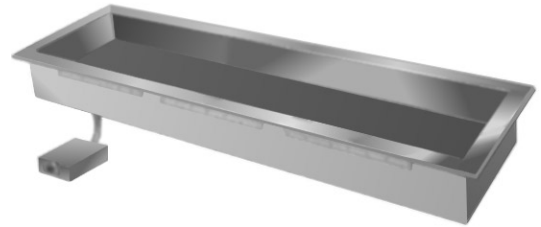
Short Form Specifications

Top shall be one-piece 18-gauge stainless steel, with .60" (1.524 cm) overhang around perimeter. Well shall be 8.00" (20.3 cm) deep, creased to a 1.00" male N.P.T. stainless steel drain. Unit shall be provided with adapter bars to allow placement of 12" x 20" (30.5 cm x 50.8 cm) pans. Unit shall have the same number of 1000 watt heating elements as the unit's 12" x 20" pan capacity, mounted on underside of well. Sides shall be insulated with 1.00" (2.5 cm) fiberglass; bottom shall have 2.00" (5.1 cm) blanket insulation. Exterior housing shall be 20-gauge galvanized steel.

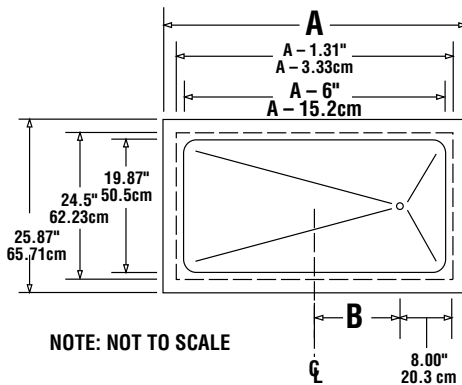
Unit shall have a single thermostat wired to a control panel for mounting in counter or at a remote location; 2' (0.6 m) length of wiring and conduit are provided. Unit shall have a three-wire electrical junction box to allow hard-wiring at installation.

Optional Accessories and Modifications:

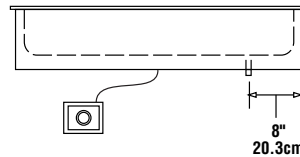
- Adapter plates and bars
- Single- or double-service flip-up sneezeguards
- Telescoping covers



Model N8887



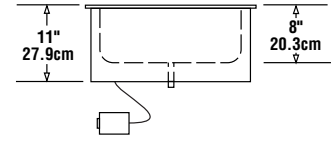
TYPICAL PLAN VIEW
N8800 MODELS



NOTE: NOT TO SCALE

CONTROL PANEL CUTOUT DIMENSION:
4.62" x 6.00" (11.7 cm x 15.2 cm)

TYPICAL ELEVATION VIEW
N8800 MODELS



NOTE: NOT TO SCALE

RIGHT END VIEW
ALL N8800 MODELS

Mechanical Data — Standard Unit



MODEL NUMBER	A	B	COUNTER CUTOUT DIMENSIONS	# OF 12" X 20" PANS HELD	VOLTS/HERTZ/ PHASE	AMPS	SHIP WEIGHT LBS/KG
N8831	31.75" (80.6cm)	5.91" (15cm)	30.75" X 25" (73cm x 58.4cm)	2	120/60/1	17.0	124/56
N8845	45.63" (115.9cm)	12.84" (32.6cm)	44.63" x 25" (108.3cm x 58.4cm)	3	208-230/60/1	14.4/15.9	150/68
N8859	59.5" (151.1cm)	19.78" (50.2cm)	58.5" x 25" (143.5cm x 58.4cm)	4	208-230/60/1	19.2/21.3	189/85
N8873	73.38" (186.4cm)	26.71" (67.8cm)	72.38" x 25" (178.8cm x 58.4cm)	5	208-230/60/1	24.0/26.6	200/91
N8887	87.25 (221.6cm)	33.65" (85.5cm)	86.25" x 25" (214cm x 58.4cm)	6	208-230/60/1	28.8/31.3	226/102