



PROJECT	
ITEM #	
QUANTITY	DATE
APPROVAL	

N8100B

Drop-In Self Contained Bloomington Style Refrigerated Cold Pans

Short Form Specifications

Top is one-piece 20-gauge stainless steel. Interior liner is 22-gauge stainless steel and is creased to a 1.00" (2.43cm) diameter drain. A stainless steel holding clip adjusts for pans recessed 2" (5.1cm), or 3" (7.6cm) to accommodate 12" x 20" (30.5cm x 50.8cm) pans 4" (10.2cm) or 6" (15.2cm) deep supplied by others. Product temperatures of 33°F (1°C) to 41°F (5°C) are maintained when 4" (10.2cm) deep pans are recessed 3" (7.6cm) at 86°F ambient room temperature, meeting NSF 7 requirements. Adapter bars are standard.

Sides and bottom are wrapped with refrigeration lines and insulated with high-density closed-cell polyurethane. Exterior housing is 22-gauge galvanized steel.

Condensing unit is suspended below the cold pan on a 16-gauge steel frame and uses HFC-134a refrigerant. Temperature control has an ON/OFF position to shut down cold pan. Unit has an 8' (2.4m) cord and NEMA 5-15P plug.

A stainless steel louver is provided for field installation; cutout dimension is 12" x 23.5" (30.5cm x 59.7cm). A second opening at the rear of the cabinet should be provided at installation to allow for proper air circulation.



Model N8156B

Optional Accessories & Modifications

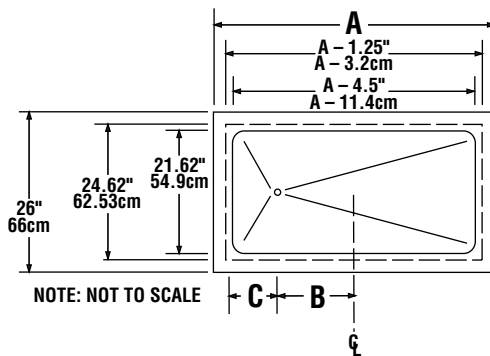
- Custom sizes and styles
 - Single or double service flip-up sneezeguards
 - Relocate compressor
 - Mullion fan assembly
 - Remote refrigeration (specify refrigerant)
 - *220V/50 cycle
- *Inclusion of this option will alter the electrical specifications of the unit



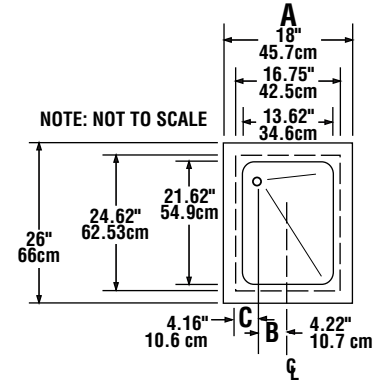
The refrigeration system on this equipment uses HFC-134a refrigerant.



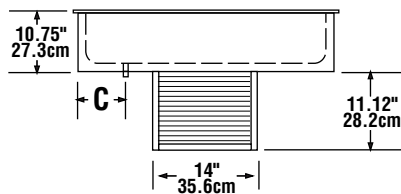
Drop-In Self Contained Bloomington Style Refrigerated Cold Pans



**TYPICAL PLAN VIEW
N8100B MODELS (EXCEPT N8118B)**

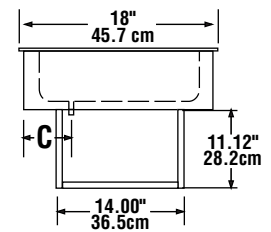


**PLAN VIEW
MODEL N8118B**

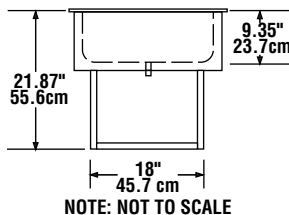


**TYPICAL ELEVATION VIEW
N8100B MODELS (EXCEPT N8118B)**

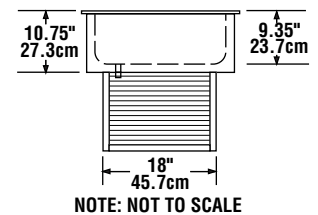
**DRAIN LOCATION IF
FACING SERVICE SIDE:
N8118B-BACK, ALL OTHER
N8100B MODELS-LEFT**



**FRONT ELEVATION VIEW
MODEL N8118B**



**TYPICAL RIGHT END VIEW
N8100B MODELS (EXCEPT N8118B)**



**RIGHT END VIEW
MODEL N8118B**

Mechanical Data: Standard Unit

MODEL NUMBER	A	B	C	COUNTER CUTOUT DIMENSIONS (D x L)	# OF 12" x 20" PANS HELD	VOLTAGE HERTZ/PHASE	H.P.	AMPS	BTU LOAD	SYS. CAP.	SHIPPING WEIGHT
N8118B	18" 45.7cm	4.22" 10.7cm	4.16" 10.6cm	17" X 25" 43.2cm x 63.5cm	1	115/60/1	1/5	4.0	204	708	103 lbs 46 kg
N8130B	30.75" 78.1cm	8.75" 22.72cm	6.00" 15.24cm	29.75" x 25" 75.6cm x 63.5cm	2	115/60/1	1/5	4.0	379	812	161 lbs 72 kg
N8143B	43.5" 110.5cm	9.82" 24.9cm	11.31" 28.7cm	42.50" X 25" 108.58cm x 63.5cm	3	115/60/1	1/5	4.0	569	889	184 lbs 83 kg
N8156B	56.25" 142.9cm	9.82" 24.9cm	17.69" 44.9cm	55.25" x 25" 140.3cm x 63.5cm	4	115/60/1	1/4	7.0	758	1373	233 lbs 105 kg
N8169B	69" 175.3cm	9.82" 24.9cm	24.06" 61.1cm	68" X 25" 172.7cm x 63.5cm	5	115/60/1	1/4	7.0	948	1469	243 lbs 109 kg
N8181B	81.75" 208cm	9.82" 24.9cm	30.43" 77.3cm	80.75" x 25" 205.1cm x 63.5cm	6	115/60/1	1/4	7.0	1138	1547	260 lbs 117 kg