



PROJECT	
ITEM #	
QUANTITY	DATE
APPROVAL	

F2800 & F2900C

Low-Profile Refrigerated Base Equipment Stands

Long Form Specifications

Exterior top is 18-gauge stainless steel with standard marine edges on all four sides. Corners are fully welded with smooth radii corners for easy clean out. Interior sub-top is made of 22-gauge 2BF stainless steel and is made integral with the top by injecting 2.00" of high density polyurethane foam between the exterior and interior tops.

Refrigerated base interior back and bottom is constructed of 22-gauge 2BF stainless steel. Exterior sides are constructed of 18-gauge stainless steel. Bottom and back are made of 22-gauge galvanized steel. Both left and right interior sides are formed of ABS plastic. The base is injected with 2.00" of high density polyurethane foam between the exterior and interior. Refrigerated base fronts are made of .095" thick ABS thermoformed plastic and backed up by ridged polyurethane water blown injection molded frames. The frames are an excellent thermo-break and superior structural material for fastening doors and drawers. Exterior machine compartment side is constructed of 18 gauge-galvanized steel.

Finished stainless steel ends are standard. Louver, coil panel and drawer faces are all standard with stainless steel construction. Units are supplied with wall-mounted bracket and threaded rod to allow installation of the unit against a solid surface, for employee safety.

Full Extension Plus drawer system is a complete drawer system, which can operate independent of the unit it's installed in. Drawer system is sized to hold 12 x 20 x 4 " deep hotel pans and smaller fractional pans. Drawer system is all stainless steel construction for maximum durability. Outer drawer track is made of 11-gauge stainless and held in place with 12-gauge up-right and cross supports. Drawer track rollers are made of Delrin™ 100 NC-10 and do not require grease for operation. Intermediate tracks are removable without tools and house Delfield's "anti-friction binary roller system". Drawer boxes are designed with "easy pan grip flanges". Tracks are designed with a stay shut feature that holds the drawer gasket tight to the base front on uneven floors. Exterior drawer fronts are made of 22-gauge stainless steel; and an interior made of ABS plastic with formed in channels to house the snap-in dart style santoprene gasket. A 12-gauge galvanized brace is foamed in place to be an integral part of the drawer front assembly. Each drawer front is injected with 1.87" of high density polyurethane foam between the exterior and interior. Handles are recessed black plastic and held in with a positive lock system.

Unit is supported with two 14-gauge leg rails that run the entire length of the unit. Leg rails are welded to the bottom side of the unit and are tied together with two 12-gauge braces running front to back. Caster/leg boxes are welded inside the leg rail and 6.12" adjustable stainless steel legs are mounted as standard with (4) 5/16" bolts.

Self-contained models have a pre-wired condensing unit and a digital thermometer installed in the machine compartments (standard on right) louver panel and supplied with an 8' cord and plug. Interior refrigerated base cabinet will maintain 36 to 40 degree temperatures at 100-degree ambient room temperature.

Refrigeration system components are HFC-404A. Interior cabinet is cooled with mullion style blower coils (coated) mounted between each door/drawer section for very even air and temperature control. Electrical connections are 115V-60H-1PH.



Model F2952C

THE FOLLOWING APPLIES TO F2800 SERIES (REMOTE) ONLY:

Remote models have a thermometer and an electric condensate evaporator installed in the removable access panel. Solenoid and thermostat are located in the evaporator coil. Remote models must be hard-wired at the installation site.

THE FOLLOWING APPLIES TO F2900 SERIES (SELF-CONTAINED) ONLY:

Self-contained models have a pre-wired condensing unit with hot gas condensate evaporator, a thermometer installed in the removable louver, and is supplied with an 8.0' (243.8 cm) cord and plug.

Optional Accessories and Modifications

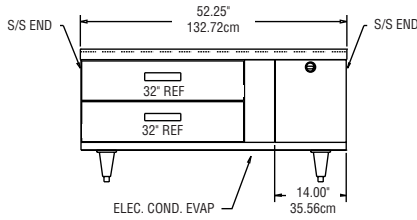
- 104 Doors, except 32"
- 108 Drawer locks
- 213 *220 volt, 50 Hertz electrical system

*Inclusion of these options will alter the electrical specifications of the unit.

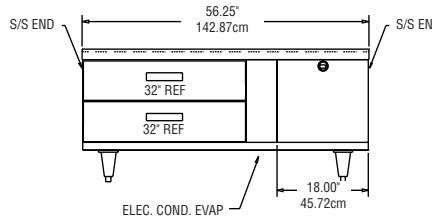


ELEVATION VIEW

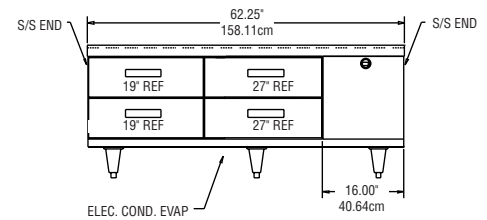
F2852



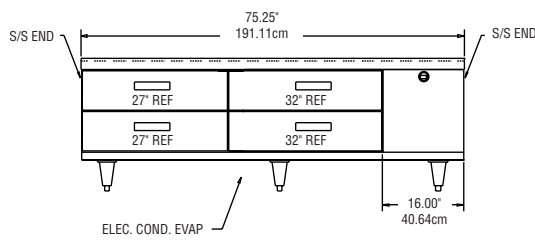
F2856



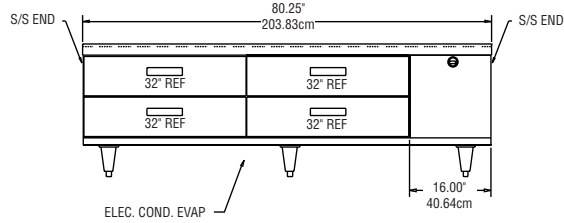
F2862



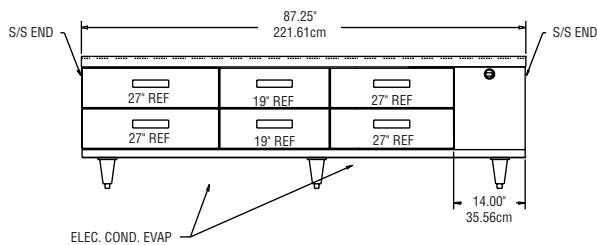
F2875



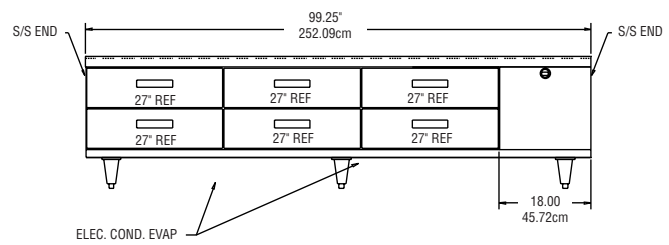
F2880



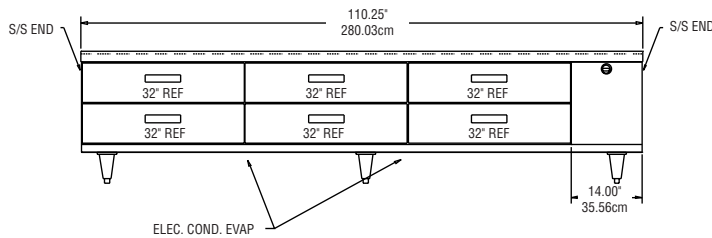
F2887



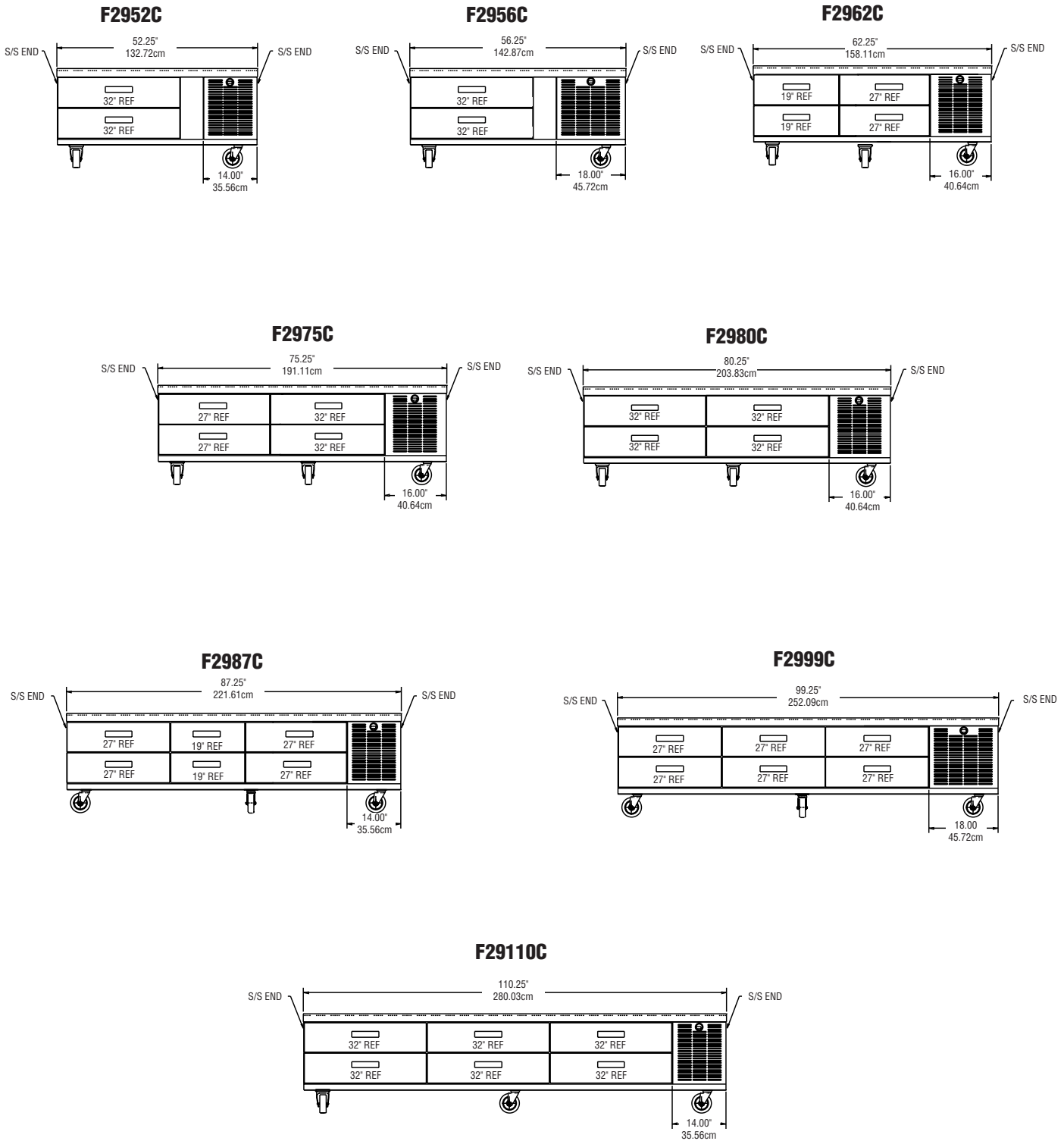
F2899

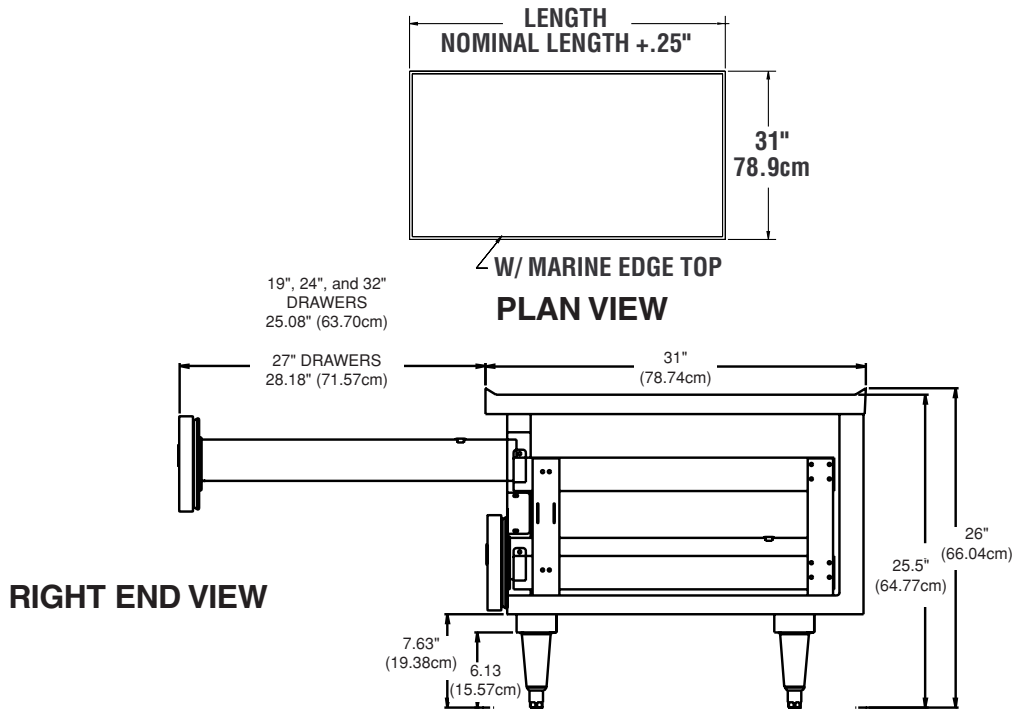


F28110



ELEVATION VIEW





Mechanical Data—Standard Unit

NOTE: Remove the "C" on the model number when ordering with legs. (example - F2952)

REMOTE

	12x20 # OF PANS	VOLTS	AMPS	H.P.*	NEMA PLUG	SHIP WEIGHT	BTU LOAD	BTU SYSTEM	EVAP CAP BTU/TD
F2852	4	115/60/1	3	1/5	NS	278	461		120/14
F2856	4	115/60/1	3	1/5	NS	299	461		120/14
F2862	6	115/60/1	3	1/5	NS	331	518		120/14
F2875	8	115/60/1	6	1/4	NS	401	717		120/14
F2880	8	115/60/1	6	1/4	NS	428	726		240/15
F2887	10	115/60/1	6	1/4	NS	466	859		240/15
F2899	12	115/60/1	6	1/4	NS	530	973		240/15
F28110	12	115/60/1	6	1/4	NS	588	1143		240/15

SELF-CONTAINED

	12x20 # OF PANS	VOLTS	AMPS	H.P.	NEMA PLUG	SHIP WEIGHT	BTU LOAD	BTU SYSTEM	EVAP CAP BTU/TD
F2952C	4	115/60/1	8	1/5	5-15P	418	461	1727	NA
F2956C	4	115/60/1	8	1/5	5-15P	439	461	1727	NA
F2962C	6	115/60/1	8	1/5	5-15P	487	518	1727	NA
F2975C	8	115/60/1	10	1/4	5-15P	589	717	2341	NA
F2980C	8	115/60/1	10	1/4	5-15P	600	726	2341	NA
F2987C	10	115/60/1	10	1/4	5-15P	637	859	2341	NA
F2999C	12	115/60/1	10	1/4	5-15P	725	973	2341	NA
F29110C	12	115/60/1	10	1/4	5-15P	744	1143	2341	NA

*= Remote; horsepower shown is recommended N/S= Not supplied, must be hard wired