



Delfield

400 SERIES

Self-Contained Compact Undercounter Refrigerator/Freezer

Project _____

Item _____

Quantity _____

CSI Section 11400

400 SERIES COMPACT UNDERCOUNTER REFRIGERATOR / FREEZER

MODELS:

406 Undercounter refrigerator
Single section on legs

407 Undercounter freezer
Single section on legs

406-CA Undercounter refrigerator
Single section on casters

407-CA Undercounter freezer
Single section on casters



Model 406-CA

STANDARD FEATURES

- Features Delfield's exclusive ABS interior. ABS is extremely durable - it won't dent, chip or corrode and is backed by a limited lifetime warranty
- Stainless steel front, sides and top
- Two epoxy coated wire shelves, standard installed per unit
- Environmentally friendly R404A refrigerant
- Foamed in place polyurethane cuts energy costs
- Black recessed quick grip handle
- Rugged 6" high heavy duty metal legs (models 406 & 407 only) Units with a "CA" suffix are standard on 3.75" casters
- All units come standard hinged right and may be changed at the factory at no charge. Indicate when order is placed
- 7' cord and plug supplied

OPTIONS AND ACCESSORIES

- Stainless steel back
- Plastic laminate on front
- Additional shelf
- Stainless steel single-tier overshef
- 3.5" (8.9cm) diameter casters
- 5" (12.7cm) diameter casters
- Model 409 stacking collar (adds 4" to overall combined height for use with models 406/407)
- Door lock
- 220 volt, 50 Hertz electrical system



SPECIFICATIONS

Exterior top shall be one-piece, 22-gauge stainless steel with front edge turned down to form nosing and rear edge turned down.

Exterior bottom shall be one piece 14-gauge galvanized metal. Exterior ends shall be 22-gauge stainless steel.

Base interior shall be one-piece thermoformed ABS plastic material, with integral shelf supports. ABS interior is backed by a limited lifetime warranty. Base shall be fully insulated with high-density foamed-in-place polyurethane.

Door shall have a 22-gauge stainless steel exterior, with a thermoformed ABS plastic interior liner, and shall be fully insulated with foamed-in-place polyurethane. Door handle shall be black, recessed ABS. Cabinet shall have (2) adjustable epoxy-coated wire shelves installed.

REFRIGERATION SYSTEM

THE FOLLOWING APPLIES TO MODELS 406/406-CA REFRIGERATORS ONLY

Refrigeration system shall use HFC-404A refrigerant. Compressor shall be 1/5 h.p., with condenser coil and hot gas condensate evaporator mounted on rear of cabinet. Evaporator coil and temperature control shall be mounted on the interior rear wall of the cabinet. Refrigerant flow shall be controlled by a capillary tube. Cabinet shall maintain 36°F to 40°F (2°C to 4°C) interior cabinet temperature.

THE FOLLOWING APPLIES TO MODELS 407/407-CA FREEZERS ONLY

Freezer system shall use HFC-404A refrigerant. Compressor shall be 1/4 h.p., with condenser coil and hot gas condensate evaporator mounted on rear of cabinet. Evaporator coil and temperature control shall be mounted on the interior rear wall of the cabinet.

Refrigerant flow shall be controlled by a capillary tube. Cabinet shall maintain -5°F to 0°F (-21°C to -18°C) interior cabinet temperature.

Electrical connections shall be 115 volt, 60 Hertz, single phase. Unit shall have a 7' (2.1m) long electrical cord and NEMA 5-15P plug. Cord and plug shall be located on rear of cabinet, 16" (40.6cm) above floor, 5" from the left side.

406/407

Equipment is shipped with loose 6" (15.2cm) high metal legs with black enamel finish unless mounting is specified on original sales order.

406-CA/407-CA

Equipment is shipped with loose 3.75" (9.5cm) high casters (two locking and two non-locking) unless mounting is specified on original sales order.



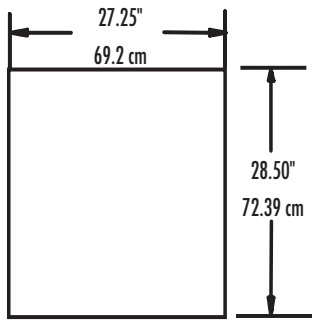
980 S. Isabella Road
Mt. Pleasant, MI 48858
www.delfield.com

Phone: 800-733-8948
Fax: 800-669-0619
Email: info@delfield.com

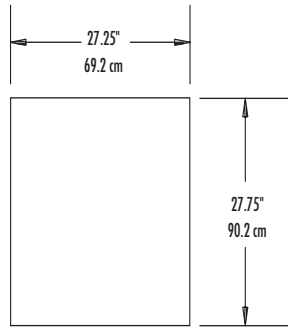
Approval _____

Date _____

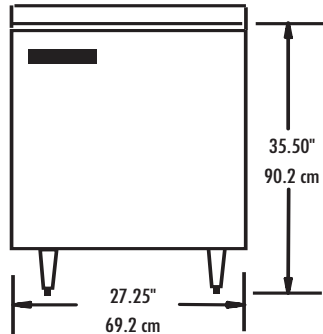
400 Series Compact Undercounter Refrigerator/Freezer



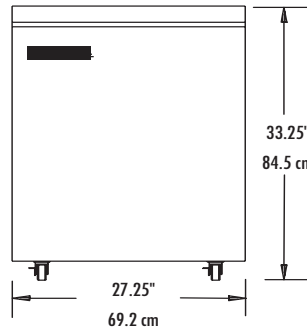
PLAN VIEW 406/407



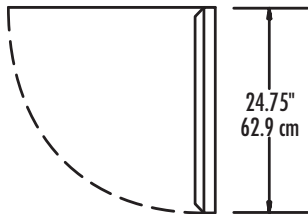
PLAN VIEW 406-CA/407-CA



ELEVATION VIEW 406/407

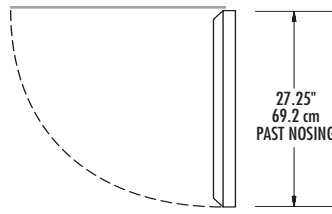


ELEVATION VIEW
406-CA/407-CA



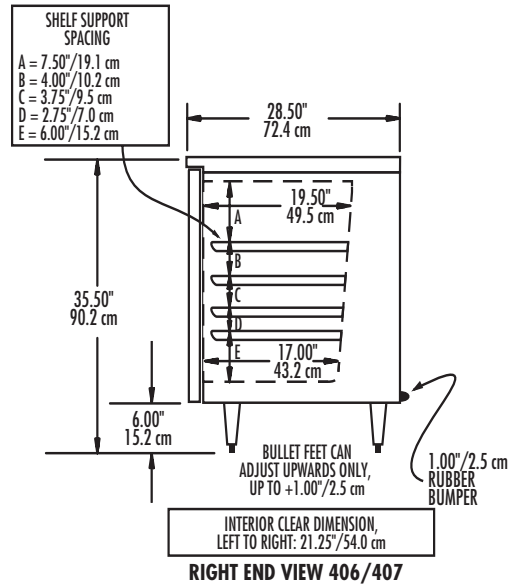
STANDARD DOOR HINGING IS ON RIGHT HINGING MAY BE REVERSED, BUT REQUIRES NEW DOOR

DOOR CLEARANCE DETAIL
406/407

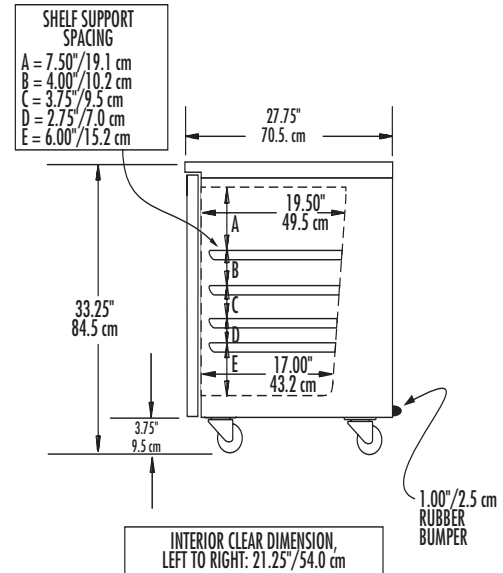


STANDARD DOOR HINGING IS ON RIGHT HINGING MAY BE REVERSED BUT REQUIRES NEW DOOR

DOOR CLEARANCE DETAIL 406-CA/407-CA



RIGHT END VIEW 406/407



RIGHT END VIEW
406-CA/407-CA

INSTALLATION NOTE ALL MODELS:

Refrigeration system is designed so that air will flow under the unit, through the compressor area, and out the top rear of the unit. Any restriction to this air flow path will void the warranties.

MECHANICAL DATA

MODEL NUMBER	VOLTAGE	AMPS	STORAGE CAPACITY	SHELF CAPACITY	H.P.	SHIP WEIGHT	NEMA PLUG
406	115	7.0	5.7ft ³	7.2ft ²	1/5	176lbs	5-15P
407	115	5.8	5.7ft ³	7.2ft ²	1/4	176lbs	5-15P
406-CA	115	7.0	5.7ft ³	7.2ft ²	1/5	168lbs	5-15P
407-CA	115	5.8	5.7ft ³	7.2ft ²	1/4	168lbs	5-15P