



STAINLESS STEEL

UTILITY/LAUNDRY ROOM SINKS



FREE STANDING UNITS

MATERIAL:

"600" Series is 16 gauge type 304 Series.
Stainless Steel tubular legs.
1" adjustable plastic bullet feet.

CONSTRUCTION:

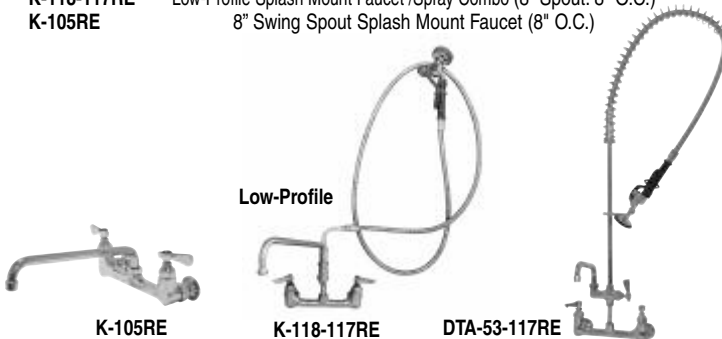
Welded areas blended to match adjacent surfaces and to a satin finish.

MECHANICAL:

Supply is 1/2" hot & cold.
Faucet holes on 8" O.C.
Waste drains are 1 1/2" IPS basket type and are included.

OPTIONAL FAUCETS for FREE STANDING UNITS

Model	Description
DTA-53-117RE	Splash Mount Faucet /Spray Combo (8" Spout. 8" O.C.)
K-118-117RE	Low-Profile Splash Mount Faucet /Spray Combo (8" Spout. 8" O.C.)
K-105RE	8" Swing Spout Splash Mount Faucet (8" O.C.)



Item #: _____ Qty #: _____

Model #: _____

Project #: _____



WALL MOUNTED UNITS

FEATURES:

Heavy Duty square design stainless steel.
12" deep bowls.
Full 10" high backsplash.
Tubular stainless steel brackets for extra vertical support.
Wall mount "Z" bracket.

CONSTRUCTION:

All TIG welded.
Welded areas blended to match adjacent surfaces and to a satin finish.
Die formed tubular wall bracket.

MECHANICAL:

Faucet holes are 4" O.C. (Faucet hole revisions available).
Faucets not included (See accessories).
3-1/2" stainless steel basket drain.

MATERIAL:

All 16 gauge type 304 series stainless steel.
1-5/8" tubular stainless steel wall brackets.
Stainless steel gussets.

OPTIONAL FAUCET for WALL MOUNTED UNITS

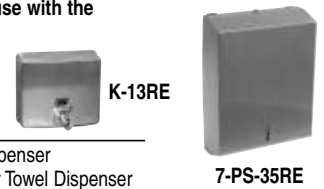
Model	Description
K-123RE*	6" Extended Swing Spout Faucet (4" O.C.)

*K-123RE Faucet is Highly Recommended for use with the Wall Mounted Units.



SINK ACCESSORIES

Model	Description
K-13RE	Stainless Steel Soap Dispenser
7-PS-35RE	Stainless Steel Wall Mounted Paper Towel Dispenser



Commercial Home Products Collection
CALL TOLL FREE: 866-799-0106 • TOLL FREE FAX: 866-799-0249 • email: info@advancetabcohome.com
200 Heartland Blvd. Edgewood New York 11717

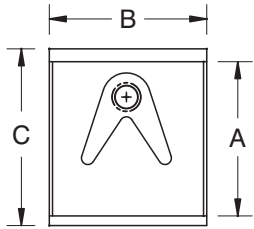
By
ADVANCE TABCO.

DIMENSIONS and SPECIFICATIONS

TOL ± .500"

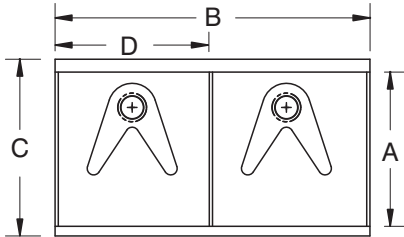
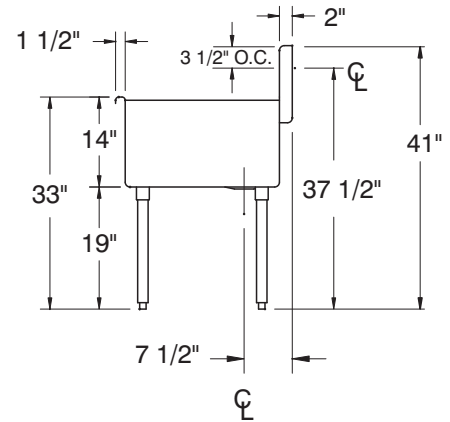
ALL DIMENSIONS ARE TYPICAL

FREE STANDING UTILITY/LAUNDRY UNITS



ONE COMPARTMENT

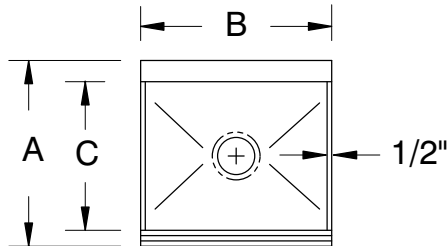
A	B	C	"600" Series 16 Ga. S/S "300"	Ship Weight
18"	18"	21 1/2"	6-81-18RE	45 lbs.
21"	24"	24 1/2"	6-1-24RE	53 lbs.
24"	24"	27 1/2"	6-41-24RE	53 lbs.
24"	36"	27 1/2"	6-41-36RE	69 lbs.



TWO COMPARTMENT

A	B	C	D	"600" Series 16 Ga. S/S "300"	Ship Weight
21"	48"	24 1/2"	24"	6-2-48RE	86 lbs.
24"	48"	27 1/2"	24"	6-42-48RE	88 lbs.

WALL MOUNTED UTILITY/LAUNDRY UNITS



Bowl Size				"600" Series 16 Ga. S/S "300"	Ship Weight
A	B	C	D		
17 1/2"	18"	14"	9"	WSS-14-21RE	45 lbs.
19 1/2"	22"	16"	11"	WSS-16-25RE	52 lbs.

